

A silhouette of a utility worker on a power pole against a sunset sky. The worker is positioned on a wooden pole, surrounded by various electrical components and wires. The sky transitions from a deep blue at the top to a warm orange at the bottom. The overall scene is backlit by the setting sun, creating a high-contrast silhouette effect.

# **Compliance Report on the Performance of Electric Cooperatives**

**4th  
quarter  
2021**

---

**Office for Performance Assessment and Special Studies**

---

## Table of Contents

I.	Executive Summary .....	3
II.	Introduction .....	4
	A. Overview .....	4
	B. NEA Policy and Guidelines .....	4
	C. Key Performance Standards and Parameters .....	6
	D. Classification of Electric Cooperatives .....	6
III.	Compliance to Key Performance Standards and Parameters. ....	13
	A. Financial and Operational Standards and Parameters .....	13
	1. Cash General Fund .....	13
	2. Collection Efficiency .....	14
	3. Payment to Generating Companies, NGCP and other .....	16
	4. Payment to Financial Institutions (NEA, Banks and other FIs) .....	19
	4. Result of Financial Operation (Before RFSC) .....	20
	5. Net Worth .....	21
	B. Technical Standards and Parameters .....	22
	1. System Loss .....	22
	2. Power Reliability .....	24
	C. Institutional Standards and Parameters .....	26
IV.	Status of Rural Electrification Program .....	28
V.	Appendices .....	30
	A. Appendix A: Electric Cooperatives Performance Assessment Sheet.....	30
	B. Appendix B: System Reliability Indices .....	35
	C. Appendix C: Table on Institutional Compliance Rating.....	39
	D. Appendix D. Monthly Institutional Assessment Report.....	43
	E. Appendix E: Table on Level of Energization .....	55
	F. Appendix F: List of Electric Cooperatives .....	59

## **I. Executive Summary**

Electric Cooperatives (ECs) are assessed quarterly to measure their compliance to the established criteria on the status of financial, operational, technical, and institutional performance. ECs are also classified accordingly to determine the needed NEA's interventions to improve and upgrade their operations.

Assessment results for the fourth quarter of 2021 showed that 57 ECs were labeled as Green, 49 as Yellow-1, 8 as Yellow-2, and 7 as Red, summing up to 121 ECs evaluated. The particulars are enclosed in this report.

In relation to their financial and operational condition, 100 ECs were able to have at least one-month working capital. Additionally, 77 ECs met the 95% threshold in terms of collection efficiency with 20 ECs being 100% efficient. On their payment status to the generating companies, there were 106 ECs tagged as current and restructured- current; 97 ECs were marked as current and restructured-current on their payment status to the National Grid Corporation of the Philippines; 96 are current on their payment of loans to NEA while 85 ECs are tagged as current on their payment to Banks and other Financing Institutions (FIs). The last parameter for the financial and operational conditions showed that there were 104 ECs with a positive income and 110 ECs with positive net worth.

On the technical criteria, 97 ECs registered system loss level within the standard of 12% or below. Out of the 97 ECs, 63 were with single-digit system loss. Aside from system loss, power reliability was also measured. 112 ECs were compliant to the System Average Interruption Frequency Index (SAIFI) standard while 115 ECs were within the System Average Interruption Duration Index (SAIDI) standard.

On the level of energization, 99 ECs recorded 91% and above, of which, 85 ECs achieved 100% energization level.

Concerning the ECs' compliance on the institutional norms, 108 ECs were categorized as compliant that include 30 ECs having 100% compliance rating.

NEA's assistance and initiatives include preparation of Operation Improvement Plan (OIP), supervision of ECs under private sector participation, and intervention of NEA to ECs such as management take-over, round table assessment, and establishment of new policies and guidelines, among others.

## II. Introduction

### Overview

The Compliance Report on the Performance of Electric Cooperatives is a quarterly summary of the EC classification. It focuses on the assessment of the ECs' performance on several aspects of operations, such as, financial, operational, technical, and institutional components. The objectives of this report are to evaluate the performance of ECs; to ensure early detection of adverse financial condition; to serve as triggers for NEA intervention in the EC operation; and to institute preventive, remedial, and mitigating measures prior to being categorized as ailing EC. Likewise Section 19 of the Implementing Rules and Regulations (IRR) of RA 10531 mandates NEA to submit quarterly compliance report to the Joint Congressional Energy Commission (JCEC) and to the Department of Energy (DOE).

This report was prepared to assess the ECs' performance during the **fourth quarter of 2021**. The cut-off date on the data contained in this report was March 15, 2022. This report was approved by the NEA Board of Administrators on April 28, 2022 under Resolution No. 2022-62.

### NEA Policies and Guidelines

Republic Act No. 10531, Rule II, Section 5. Powers, Functions, and Privileges of NEA, states that in order to strengthen the ECs, NEA shall help them become economically viable and prepare them for the implementation of retail competition and open access pursuant to Sections 31 of the EPIRA.

Under Rule IV, Section 19, it is specified that NEA shall have the following obligations:

- a. To develop standards, and protocols for the efficient operation of the ECs;
- b. To develop financial and operational parameters to serve as triggers for intervention of the NEA;
- c. To evaluate and categorize ECs based on standards;
- d. To enforce performance standards and submit quarterly reports which shall include summary of compliances to key performance standards and recommendation for rehabilitation in case of ailing ECs;
- e. To protect the interest of the member-consumers and the public in general; and
- f. To create a NEA rehabilitation team to assist the ailing ECs improve its financial and technical conditions.

In compliance, the NEA formulated the Guidelines for the Classification of Electric Cooperatives and Provision for NEA Intervention which was approved by the NEA Board of Administrators in November 2013 and by the Department of Energy in December 2013.

After review of its adoption and implementation, the approved Guidelines for the Classification of ECs was enhanced in October 2020 to give provision for the assessment of performance parameter on System Reliability as well as their amortization payments to NEA and other financing Institutions. The Guidelines for the Declaration and Graduation of Ailing ECs were likewise adopted.

The 2020 guidelines classified the ECs into the following:

- a. Green – ECs which are able to meet all the seven (7) performance standards and parameters;
- b. Yellow-1 – ECs which fail to comply with not more than three (3) key performance standards and parameters;
- c. Yellow-2 – ECs which fail to comply with four (4) or more of the key performance standards and parameters, and ECs which fall under the six (6) circumstances mentioned in Section 20 of the IRR but have not been declared as ailing ECs; and
- d. Red – ECs which have been declared as “ailing” after observance of due process.

Under RA 10531, Section 20. Ailing ECs, an EC may be declared as ailing when it falls to the following circumstances:

- a. Has negative net worth for the last three (3) years. For this purpose, “*Negative Net Worth*” shall mean as the financial condition of an EC in which its liabilities are greater than its assets;
- b. Has accumulated ninety (90) days arrearages in power supply purchases from generating companies and power suppliers/source of electricity, and the transmission charges by the Transco or its Concessionaire;
- c. Unable to provide electric service due to technical and/or financial inefficiencies, and/or institutional problems;
- d. Unable to efficiently perform its electric distribution utility obligations or continue in business due to organizational, external, and internal factors;
- e. When an EC has failed to meet other operational standards established by the NEA; and
- f. Unable to set up or continuously support its Wholesale Electricity Spot Market prudential requirements.

As part of due process, the EC may be afforded a recovery period of not more than one (1) year to undertake remedial and mitigating measures including a doable Operation Improvement Plan (OIP) to be submitted to the NEA for approval. If within a certain time, not exceeding one hundred and eighty (180) days from the implementation of the OIP, there is no sign of concrete and substantial improvement in the operational and/or financial condition of the EC, the OIP shall be set aside and become wholly inoperative and the EC shall be declared as ailing EC.

## Key Performance Standards and Parameters

There are seven established standards and parameters used in the assessment of the ECs' financial and technical conditions (Table 1).

**Table 1.** Established Key Performance Standards and Parameters

Parameter	Standard
Cash General Fund	At least one month working capital
Collection Efficiency	95% and above
Payment to GENCO; NGCP; NEA and other Financial Institutions	Current/Restructured Current
Result of Financial Operation (Before RFSC)	Positive
Net Worth	Positive
System Loss	Within the Cap
System Reliability (SAIDI/SAIFI)	Within the standard set by Philippine Distribution Code: On-Grid – 25 interruptions per consumer per year Off-Grid – 30 interruptions per consumer per year

## Classification of Electric Cooperatives

For the fourth quarter of 2021, the ECs were classified as 57 Green, 49 ECs as Yellow-1, 8 ECs as Yellow-2, and 7 ECs tagged as Red (Tables 2-5).

**Table 2.** 2021 Q4 Green Electric Cooperatives

57 GREEN ELECTRIC COOPERATIVES				
ISECO	PELCO I	FICELCO	BOHECO II	MORESCO II
LUELCO	PELCO II	CAPELCO	DORELCO	BUSECO
PANELCO III	PENELCO	ILECO I	LEYECO II	COTELCO
CAGELCO II	FLECO	ILECO III	LEYECO III	COTELCO-PPALMA
QUIRELCO	BATELEC II	GUIMELCO	LEYECO IV	ANECO
MOPRECO	QUEZELCO II	NOCECO	SOLECO	SIARELCO
AURELCO	OMECO	BANELCO	BILECO	DIELCO
TARELCO II	TIELCO	CEBECO I	SAMELCO I	SURSECO I
NEECO I	ROMELCO	CEBECO II	SAMELCO II	SURSECO II
NEECO II – AREA 1	CANORECO	CEBECO III	ESAMELCO	
NEECO II - AREA 2	CASURECO I	PROSIELCO	ZAMSURECO I	
PRESKO	CASURECO IV	CELCO	MORESCO I	

**Table 3.** 2021 Q4 Yellow-1 Electric Cooperatives

<b>49 YELLOW-1 ELECTRIC COOPERATIVES</b>				
INEC	TARELCO I	BISELCO	NONECO	CAMELCO
PANELCO I	SAJELCO	PALECO	CENECO	LANECO
CENPELCO	PELCO III	CASURECO II	NORECO I	DORECO
BATANELCO	ZAMECO I	CASURECO III	NORECO II	DASURECO
CAGELCO I	ZAMECO II	SORECO I	BOHECO I	SOCOTECO I
ISELCO I	BATELEC I	SORECO II	LEYECO V	SOCOTECO II
ISELCO II	QUEZELCO I	TISELCO	NORSAMELCO	SUKELCO
NUVELCO	LUBELCO	AKELCO	ZANECO	ASELCO
IFELCO	ORMECO	ANTECO	MOELCI I	SURNECO
KAELCO	MARELCO	ILECO II	MOELCI II	

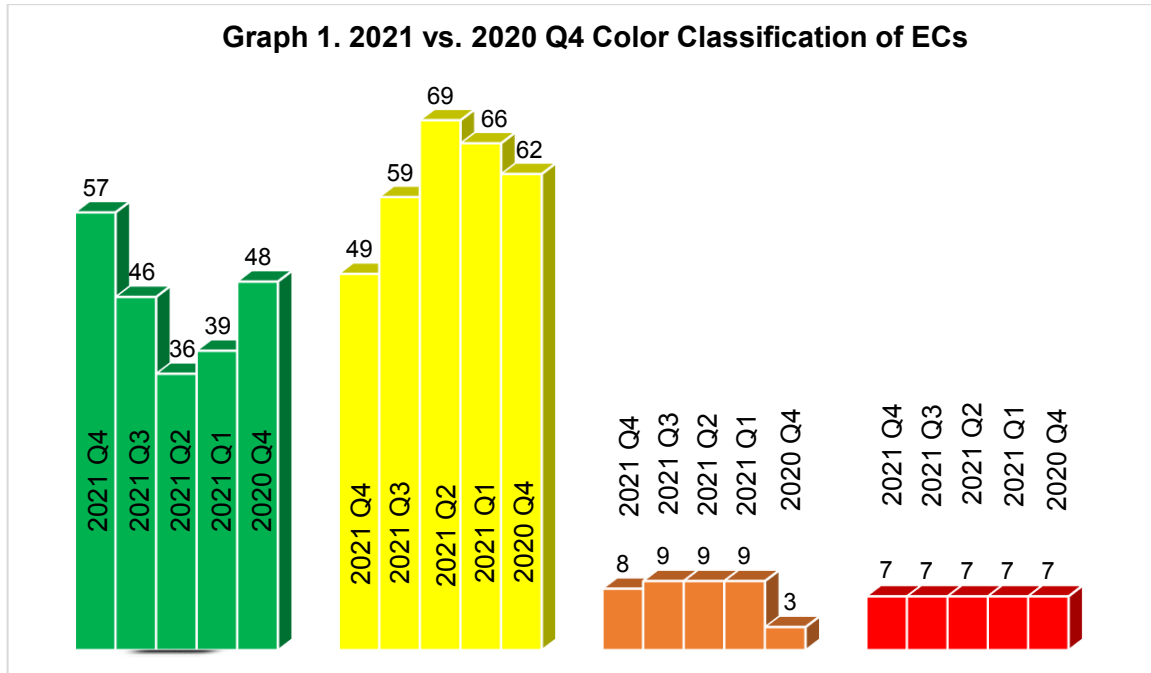
**Table 4.** 2021 Q4 Yellow-2 Electric Cooperatives

<b>8 YELLOW-2 ELECTRIC COOPERATIVES</b>		
BENECO	FIBECO	CASELCO
ZAMSURECO II	DANECO	MAGELCO
ZAMCELCO	SIASELCO	

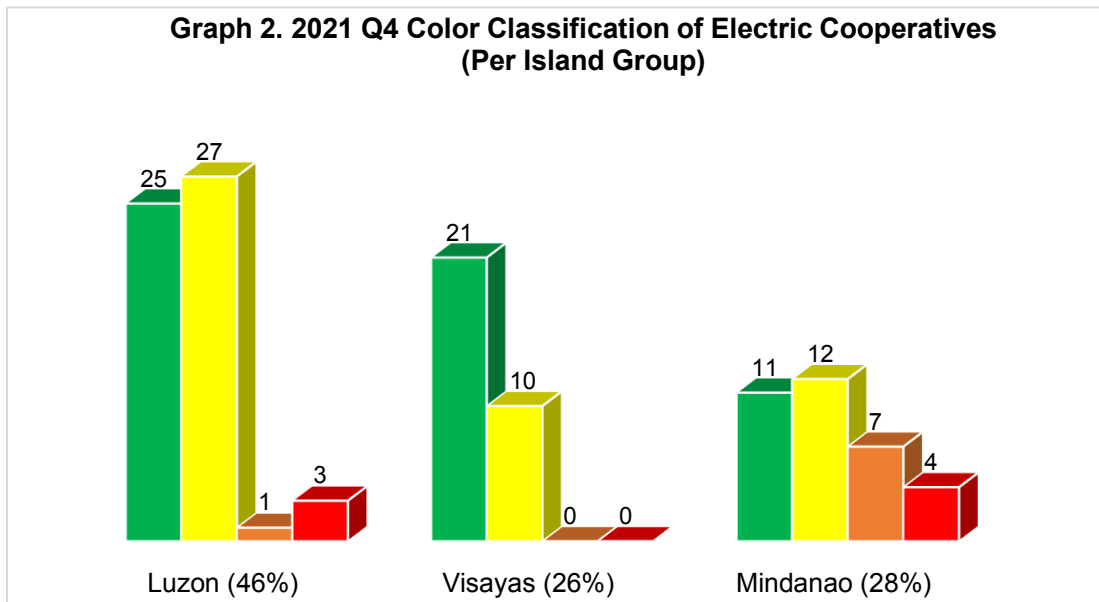
**Table 5.** 2021 Q4 Red Electric Cooperatives

<b>7 RED ELECTRIC COOPERATIVES</b>			
ABRECO	MASELCO	SULECO	LASURECO
ALECO	TAWELCO	BASELCO	

The number of Green ECs continues to vary for the last few quarters with an increase of 9 ECs as compared to 2020 4<sup>th</sup> quarter while Red ECs remained the same (Graph 1).



Among the three island groups, Luzon, Visayas, and Mindanao, ECs under Visayas performed significantly well as all their ECs were classified as either Green or Yellow-1 (Graph 2).





**Table 6.** 2021 vs. 2020 Q4 Color Classification of Electric Cooperatives (Per Region)

Electric Cooperatives	2021 Q4	2021 Q3	2021 Q2	2021 Q1	2020 Q4
<b>Region I</b>					
INEC	Yellow-1	Yellow-1	Yellow-1	Green	Yellow-1
ISECO	Green	Green	Yellow-1	Yellow-1	Green
LUELCO	Green	Green	Green	Green	Yellow-1
PANELCO I	Yellow-1	Yellow-1	Yellow-1	Yellow-1	Yellow-1
CENPELCO	Yellow-1	Yellow-1	Yellow-1	Yellow-2	Yellow-1
PANELCO III	Green	Green	Green	Green	Yellow-1
<b>Region II</b>					
BATANELCO	Yellow-1	Yellow-1	Yellow-2	Yellow-2	Green
CAGELCO I	Yellow-1	Yellow-1	Yellow-1	Yellow-1	Green
CAGELCO II	Green	Green	Yellow-1	Yellow-1	Green
ISELCO I	Yellow-1	Yellow-1	Green	Yellow-1	Yellow-1
ISELCO II	Yellow-1	Yellow-1	Yellow-1	Yellow-1	Yellow-1
NUVELCO	Yellow-1	Yellow-1	Yellow-1	Yellow-1	Yellow-1
QUIRELCO	Green	Yellow-1	Yellow-1	Yellow-1	Yellow-1
<b>CAR</b>					
ABRECO	Red	Red	Red	Red	Red
BENECO	Yellow-2	Yellow-1	Yellow-1	Green	Yellow-1
IFELCO	Yellow-1	Yellow-2	Yellow-2	Yellow-1	Yellow-2
KAELCO	Yellow-1	Yellow-1	Yellow-2	Yellow-1	Yellow-1
MOPRECO	Green	Green	Green	Yellow-1	Green
<b>Region III</b>					
AURELCO	Green	Yellow-1	Yellow-1	Yellow-1	Yellow-1
TARELCO I	Yellow-1	Yellow-1	Yellow-1	Yellow-1	Yellow-1
TARELCO II	Green	Green	Green	Green	Yellow-1
NEECO I	Green	Green	Green	Green	Yellow-1
NEECO II – AREA 1	Green	Green	Green	Green	Green
NEECO II – AREA 2	Green	Green	Green	Yellow-1	Yellow-1
SAJELCO	Yellow-1	Yellow-1	Yellow-1	Yellow-1	Green
PRESCO	Green	Green	Green	Green	Green
PELCO I	Green	Green	Green	Green	Green
PELCO II	Green	Green	Yellow-1	Yellow-1	Yellow-1
PELCO III	Yellow-1	Yellow-1	Yellow-1	Yellow-1	Yellow-1
PENELCO	Green	Yellow-1	Yellow-1	Yellow-1	Yellow-1
ZAMECO I	Yellow-1	Yellow-1	Green	Green	Green
ZAMECO II	Yellow-1	Yellow-1	Yellow-1	Yellow-1	Yellow-1

Table 6. (Continued)

Electric Cooperatives	2021 Q4	2021 Q3	2021 Q2	2020 Q1	2020 Q4
<b>Region IV-A</b>					
FLECO	Green	Green	Green	Yellow-1	Yellow-1
BATELEC I	Yellow-1	Yellow-1	Yellow-1	Yellow-1	Yellow-1
BATELEC II	Green	Green	Green	Green	Green
QUEZELCO I	Yellow-1	Yellow-1	Yellow-1	Yellow-1	Yellow-1
QUEZELCO II	Green	Green	Green	Green	Green
<b>Region IV-B</b>					
LUBELCO	Yellow-1	Yellow-1	Yellow-1	Yellow-1	Yellow-1
OMECO	Green	Yellow-1	Yellow-1	Yellow-1	Yellow-1
ORMECO	Yellow-1	Yellow-1	Yellow-1	Yellow-1	Yellow-1
MARELCO	Yellow-1	Yellow-1	Yellow-1	Yellow-1	Yellow-1
TIELCO	Green	Green	Green	Green	Green
ROMELCO	Green	Yellow-1	Yellow-1	Yellow-1	Yellow-1
BISELCO	Yellow-1	Yellow-1	Yellow-1	Yellow-1	Green
PALECO	Yellow-1	Yellow-1	Yellow-1	Yellow-1	Yellow-1
<b>Region V</b>					
CANORECO	Green	Yellow-1	Yellow-1	Yellow-1	Yellow-1
CASURECO I	Green	Yellow-1	Yellow-1	Yellow-1	Green
CASURECO II	Yellow-1	Yellow-1	Yellow-1	Yellow-1	Green
CASURECO III	Yellow-1	Yellow-1	Yellow-1	Yellow-2	Yellow-1
CASURECO IV	Green	Green	Green	Green	Green
ALECO	Red	Red	Red	Red	Red
SORECO I	Yellow-1	Yellow-1	Yellow-1	Yellow-1	Yellow-1
SORECO II	Yellow-1	Yellow-1	Yellow-1	Yellow-1	Yellow-1
FICELCO	Green	Green	Yellow-1	Yellow-1	Green
MASELCO	Red	Red	Red	Red	Red
TISELCO	Yellow-1	Yellow-2	Yellow-1	Yellow-1	Yellow-1
<b>Region VI</b>					
AKELCO	Yellow-1	Yellow-1	Yellow-1	Yellow-1	Yellow-1
ANTECO	Yellow-1	Yellow-1	Yellow-1	Yellow-1	Yellow-1
CAPELCO	Green	Green	Yellow-1	Green	Green
ILECO I	Green	Yellow-1	Green	Green	Green
ILECO II	Yellow-1	Yellow-1	Green	Green	Yellow-1
ILECO III	Green	Green	Green	Green	Green
GUIMELCO	Green	Green	Green	Green	Green
NONECO	Yellow-1	Yellow-1	Yellow-1	Yellow-1	Yellow-1
CENECO	Yellow-1	Yellow-1	Yellow-1	Yellow-1	Yellow-1
NOCECO	Green	Yellow-1	Yellow-1	Yellow-1	Green

**Table 6.** (Continued)

<b>Electric Cooperatives</b>	<b>2021 Q4</b>	<b>2021 Q3</b>	<b>2021 Q2</b>	<b>2021 Q1</b>	<b>2020 Q4</b>
<b>Region VII</b>					
NORECO I	Yellow-1	Green	Yellow-1	Green	Green
NORECO II	Yellow-1	Yellow-1	Yellow-1	Yellow-1	Yellow-1
BANELCO	Green	Green	Green	Green	Yellow-1
CEBECO I	Green	Green	Green	Green	Green
CEBECO II	Green	Green	Green	Green	Green
CEBECO III	Green	Green	Green	Yellow-1	Green
PROSIELCO	Green	Green	Green	Green	Green
CELCO	Green	Yellow-1	Yellow-1	Yellow-1	Yellow-1
BOHECO I	Yellow-1	Green	Green	Green	Green
BOHECO II	Green	Green	Green	Yellow-1	Green
<b>Region VIII</b>					
DORELCO	Green	Yellow-1	Green	Green	Green
LEYECO II	Green	Green	Green	Green	Green
LEYECO III	Green	Green	Green	Yellow-1	Yellow-1
LEYECO IV	Green	Green	Green	Green	Green
LEYECO V	Yellow-1	Yellow-1	Yellow-1	Yellow-1	Yellow-1
SOLECO	Green	Yellow-1	Yellow-1	Green	Green
BILECO	Green	Yellow-1	Yellow-1	Yellow-1	Yellow-1
NORSAMELCO	Yellow-1	Green	Yellow-1	Green	Green
SAMELCO I	Green	Green	Yellow-1	Green	Green
SAMELCO II	Green	Green	Yellow-1	Yellow-1	Green
ESAMELCO	Green	Green	Yellow-1	Yellow-1	Green
<b>Region IX</b>					
ZANECO	Yellow-1	Yellow-1	Yellow-1	Yellow-1	Yellow-1
ZAMSURECO I	Green	Green	Yellow-1	Yellow-1	Green
ZAMSURECO II	Yellow-2	Yellow-2	Yellow-2	Yellow-2	Yellow-2
ZAMCELCO	Yellow-2	Yellow-2	Yellow-2	Yellow-2	Yellow-2
<b>Region X</b>					
MOELCI I	Yellow-1	Yellow-1	Yellow-1	Green	Yellow-1
MOELCI II	Yellow-1	Green	Yellow-1	Yellow-1	Yellow-1
MORESCO I	Green	Green	Yellow-1	Yellow-1	Green
MORESCO II	Green	Yellow-1	Yellow-1	Yellow-1	Yellow-1
FIBECO	Yellow-2	Yellow-1	Yellow-2	Yellow-2	Yellow-1
BUSECO	Green	Yellow-1	Yellow-1	Green	Green
CAMELCO	Yellow-1	Yellow-1	Yellow-1	Yellow-1	Yellow-1
LANECO	Yellow-1	Yellow-1	Yellow-1	Yellow-1	Yellow-1

**Table 6.** (Continued)

<b>Electric Cooperatives</b>	<b>2021 Q4</b>	<b>2021 Q3</b>	<b>2021 Q2</b>	<b>2021 Q1</b>	<b>2020 Q4</b>
<b>Region XI</b>					
DORECO	Yellow-1	Yellow-2	Yellow-1	Yellow-1	Yellow-1
DANECO	Yellow-2	Yellow-2	Yellow-2	Yellow-2	Yellow-1
DASURECO	Yellow-1	Yellow-1	Yellow-1	Yellow-1	Yellow-1
<b>Region XII</b>					
COTELCO	Green	Yellow-1	Yellow-1	Yellow-1	Yellow-1
COTELCO-PPALMA	Green	Yellow-1	Yellow-1	Yellow-1	Yellow-1
SOCOTECO I	Yellow-1	Yellow-1	Yellow-1	Yellow-1	Yellow-1
SOCOTECO II	Yellow-1	Yellow-1	Yellow-1	Yellow-1	Yellow-1
SUKELCO	Yellow-1	Yellow-1	Yellow-1	Yellow-1	Yellow-1
<b>ARMM</b>					
TAWELCO	Red	Red	Red	Red	Red
SIASELCO	Yellow-2	Yellow-2	Yellow-1	Yellow-1	Yellow-1
SULECO	Red	Red	Red	Red	Red
BASELCO	Red	Red	Red	Red	Red
CASELCO	Yellow-2	Yellow-2	Yellow-2	Yellow-2	Yellow-2
LASURECO	Red	Red	Red	Red	Red
MAGELCO	Yellow-2	Yellow-2	Yellow-2	Yellow-2	Yellow-1
<b>Region XIII</b>					
ANECO	Green	Green	Green	Green	Green
ASELCO	Yellow-1	Green	Green	Yellow-1	Yellow-1
SURNECO	Yellow-1	Green	Green	Yellow-1	Green
SIARELCO	Green	Green	Yellow-1	Green	Green
DIELCO	Green	Green	Green	Green	Green
SURSECO I	Green	Green	Green	Green	Green
SURSECO II	Green	Green	Yellow-1	Green	Green

Sorted by region, comparative analysis of the classification of ECs are also presented (Table 6).

### III. Compliance to Key Performance Standards and Parameters

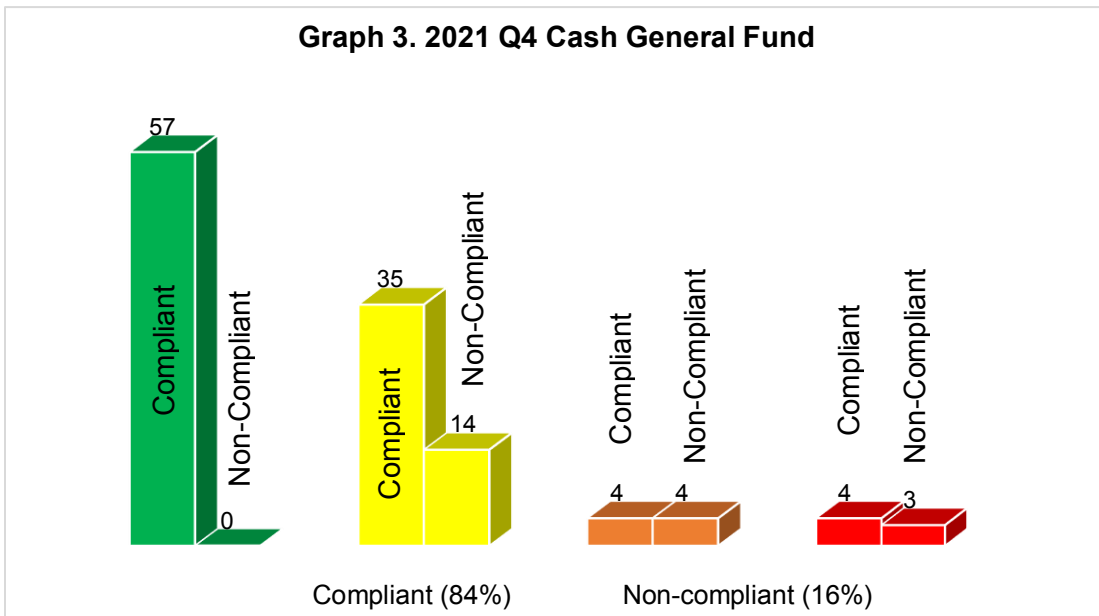
#### A. Financial and Operational Standards and Parameters

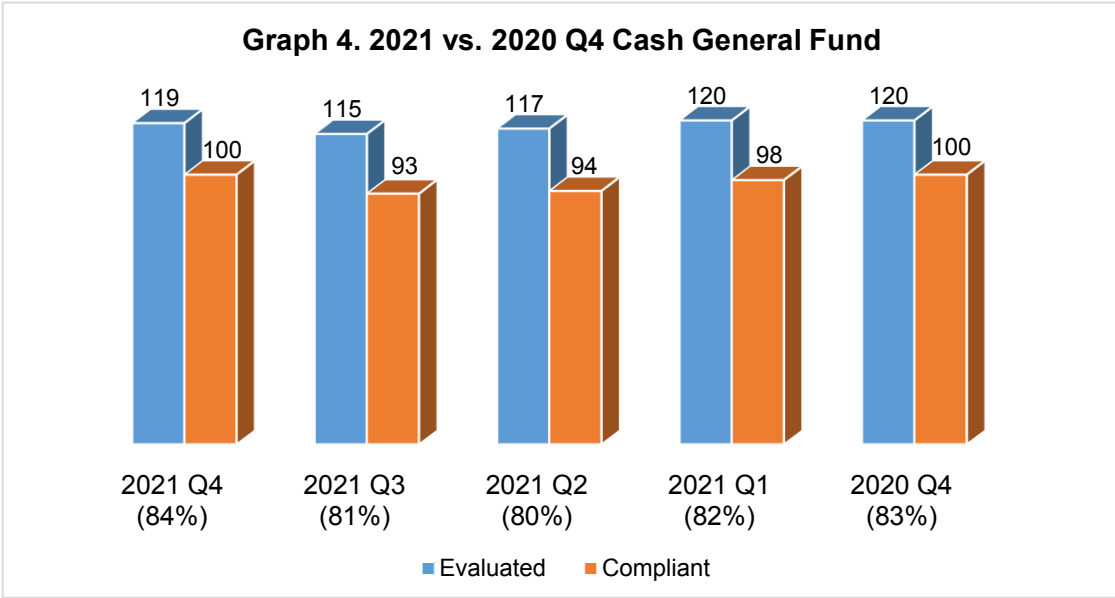
There are five financial and operational standards and parameters used in the classification of ECs. The performance of the ECs is presented in comparison with their performance from the previous year. ECs with incomplete submission or no submission were not evaluated. For specifics, go to Appendix A.

##### Cash General Fund

This parameter measures the ability of an EC to continue their daily operation for a span of one month. An EC is considered compliant by maintaining a higher working capital fund against the one-month working capital requirement.

Among the 121 ECs, there were 119 ECs evaluated with only 100 ECs being compliant (Graph 3).



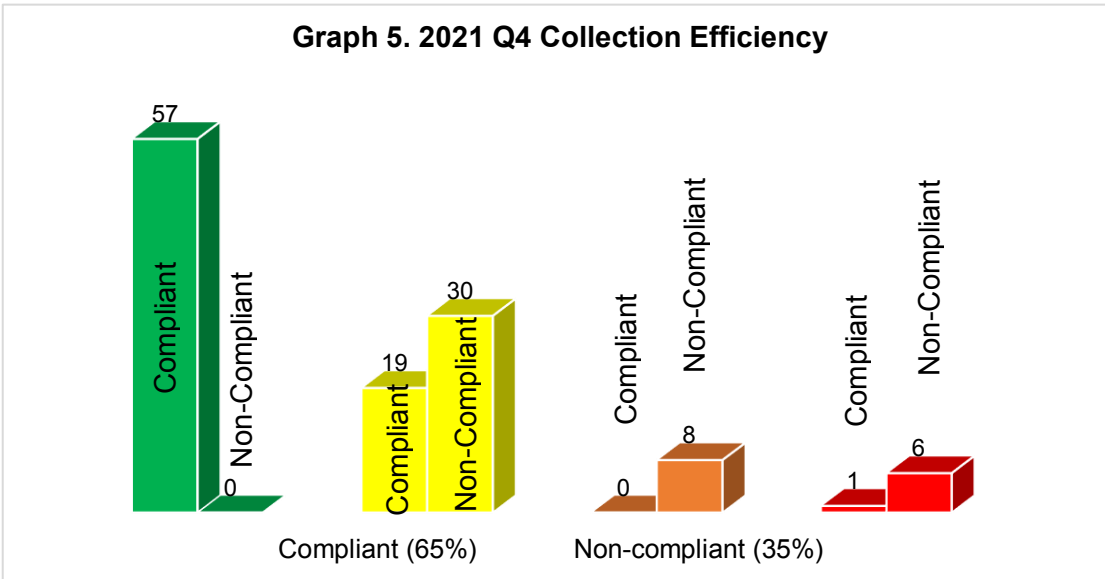


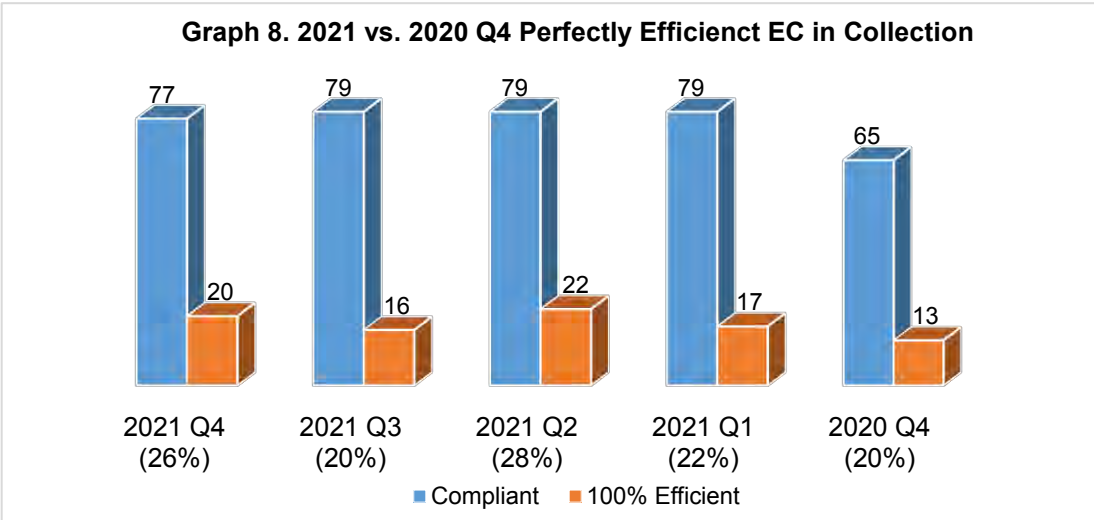
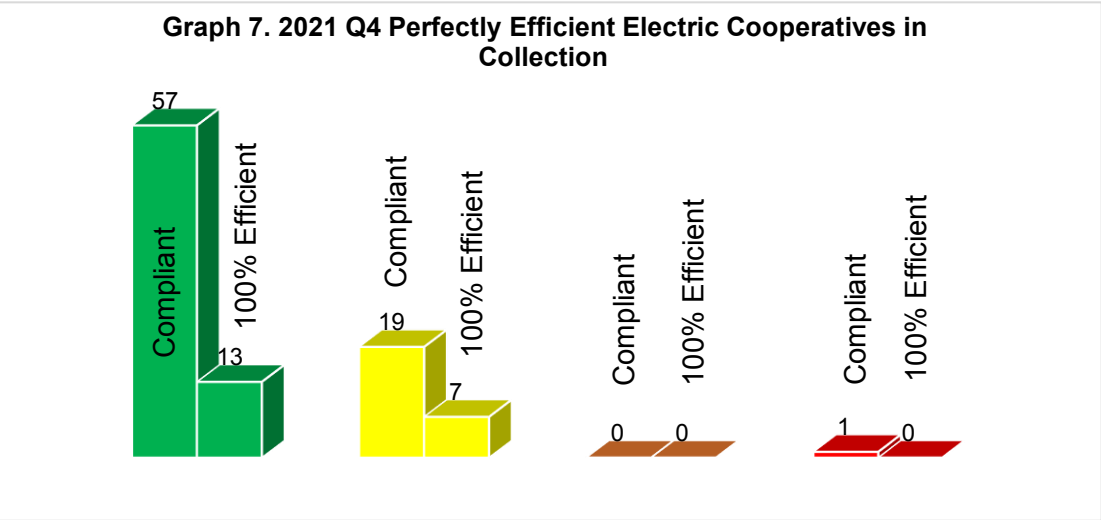
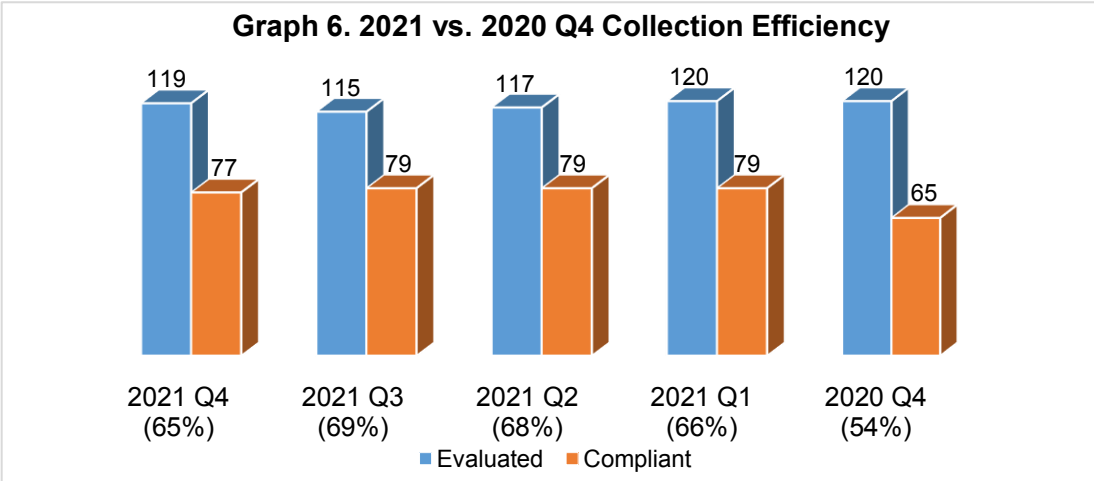
Comparing this quarter’s performance from last quarter’s results, there is an increase in ECs being evaluated on their financial state based on the ECs ability to operate continuously from 93-100. Likewise, there is also an increase in the level of compliance by 3% compared to last quarter’s performance (Graph 4).

**Collection Efficiency**

An EC’s collection efficiency refers to its capability to collect its corresponding consumer accounts receivables. The standard level is 95%.

Of the 121 ECs, 119 ECs were assessed and the result was 77 ECs or 65% were able to collect at least 95% of its consumer accounts receivables (Graph 5).



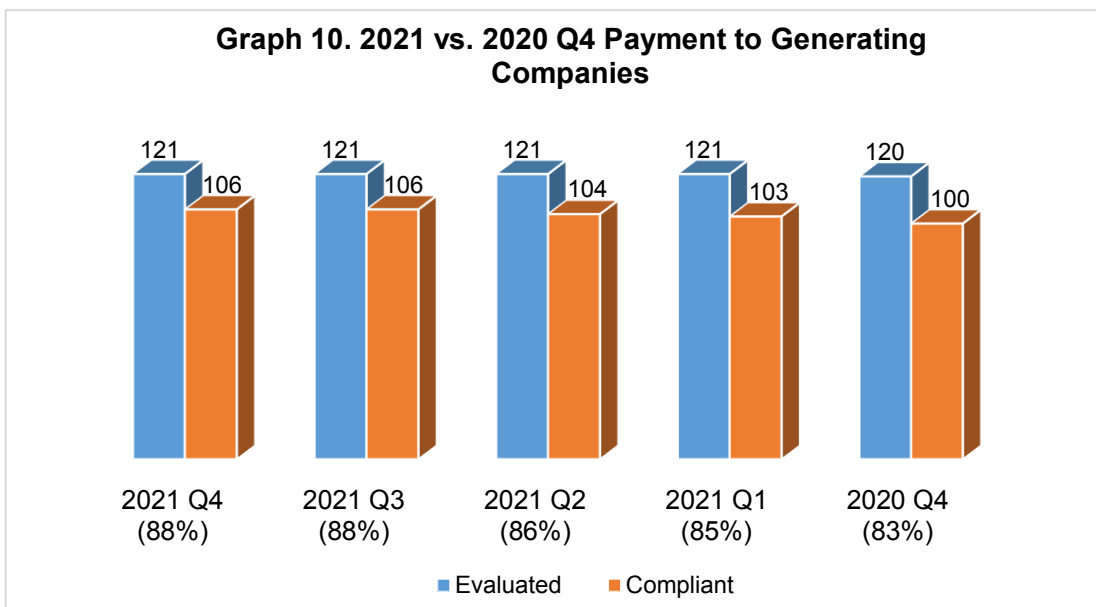
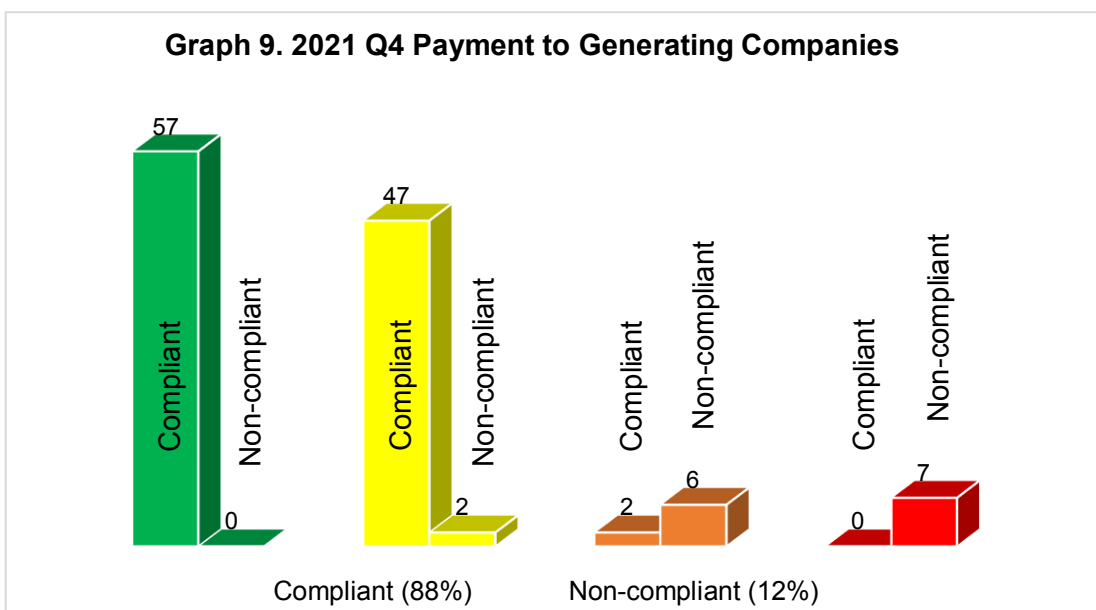


There is a decrease of 2 or 4% in the number of compliant ECs as compared to last quarter. There was, however, an increase in the compliant ECs from 2021 as compared to 2020 4<sup>th</sup> quarter assessment (Graph 6). Out of the 77 compliant ECs, 20 were 100% efficient. (Graph 7). There was an increase in the number of ECs who were 100% efficient in their collection efforts for the fourth quarter of this year compared to previous year's fourth quarter performance (Graph 8).

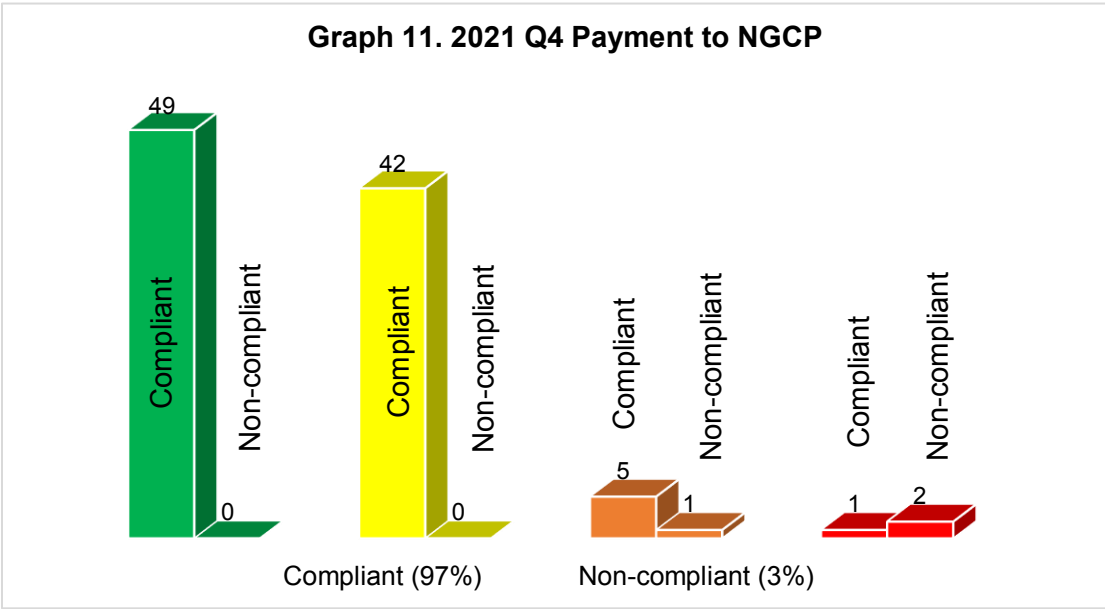
## Payment to Generating Companies and NGCP

This condition denotes that an EC is compliant if it is able to pay its power accounts to generating companies (GENCO), and its transmission bills to National Grid Corporation of the Philippines (NGCP). A status of “Current” or “Restructured- Current” indicates the capacity of an EC to pay its fees on time. On the other hand, “Arrears” or “Restructured Arrears” shows the inability of an EC to pay its dues regularly.

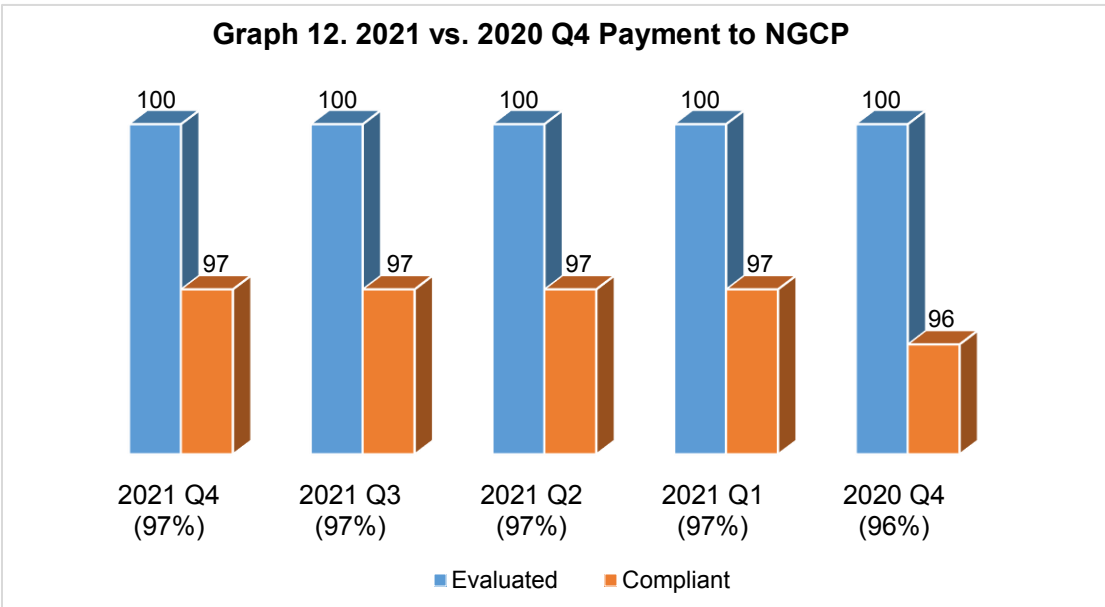
All 121 ECs were evaluated for their payment to generating companies. Out of the 121, 106 ECs or 88% were with “Current” or “Restructured - Current” status, marking them as compliant (Graph 9). The payment to generating companies are kept within 80-90%, and this quarter, as well as 3<sup>rd</sup> quarter, is marked as the highest with 88% compliance (Graph 10).



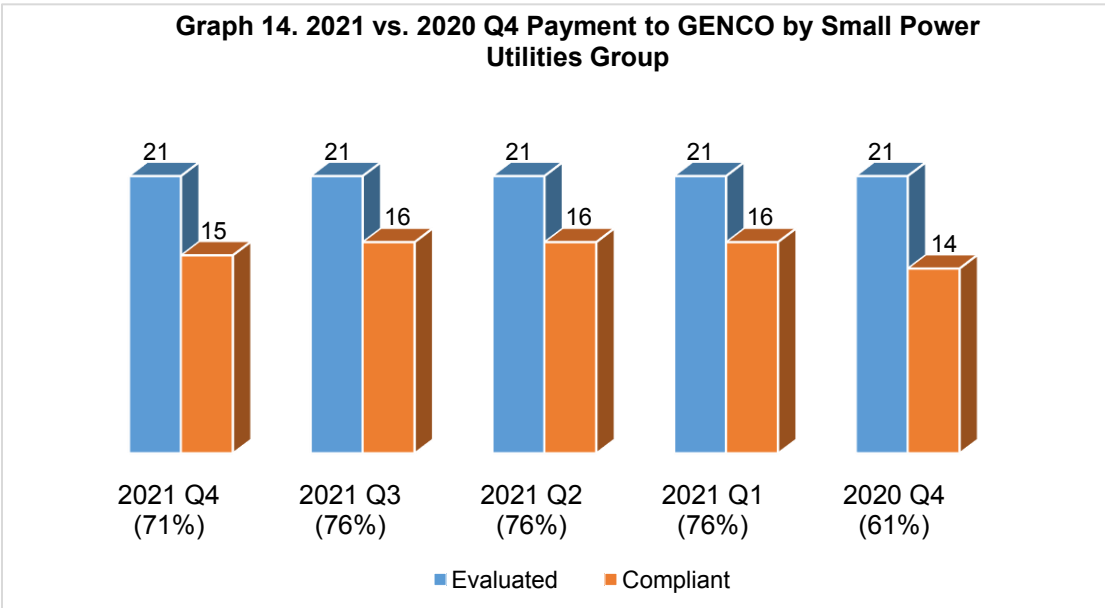
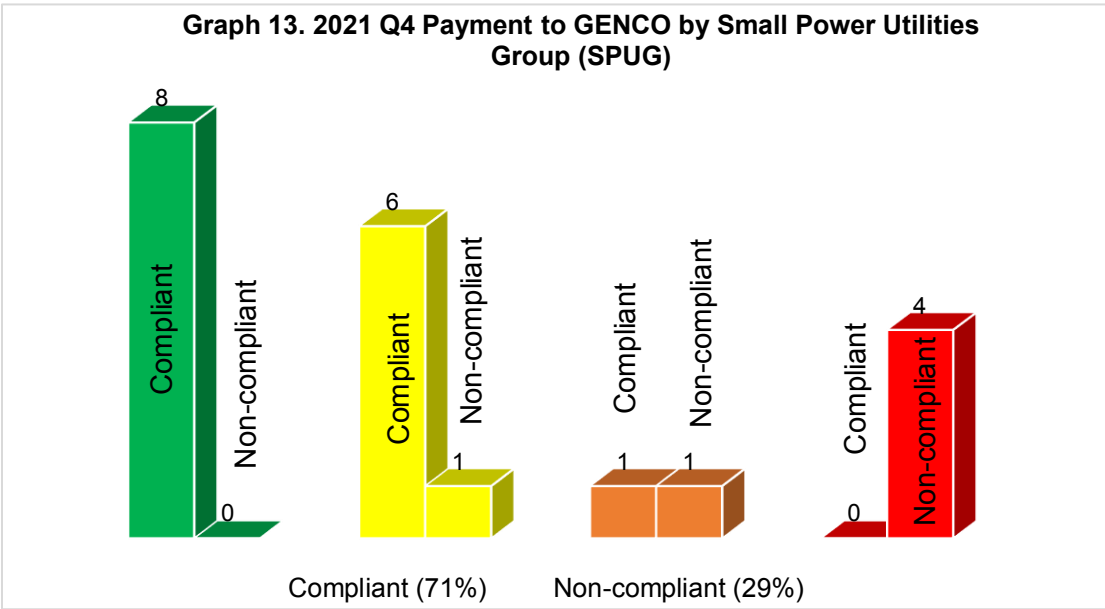




\*Excludes 21 SPUG ECs



As regards their payment to NGCP, there were 97 ECs marked as compliant (Graph 11) for the fourth quarter of this year. It was observed that the level of compliance is the same for all quarters of 2021 and with a slight increase compared to 2020 4<sup>th</sup> quarter level (Graph 12).

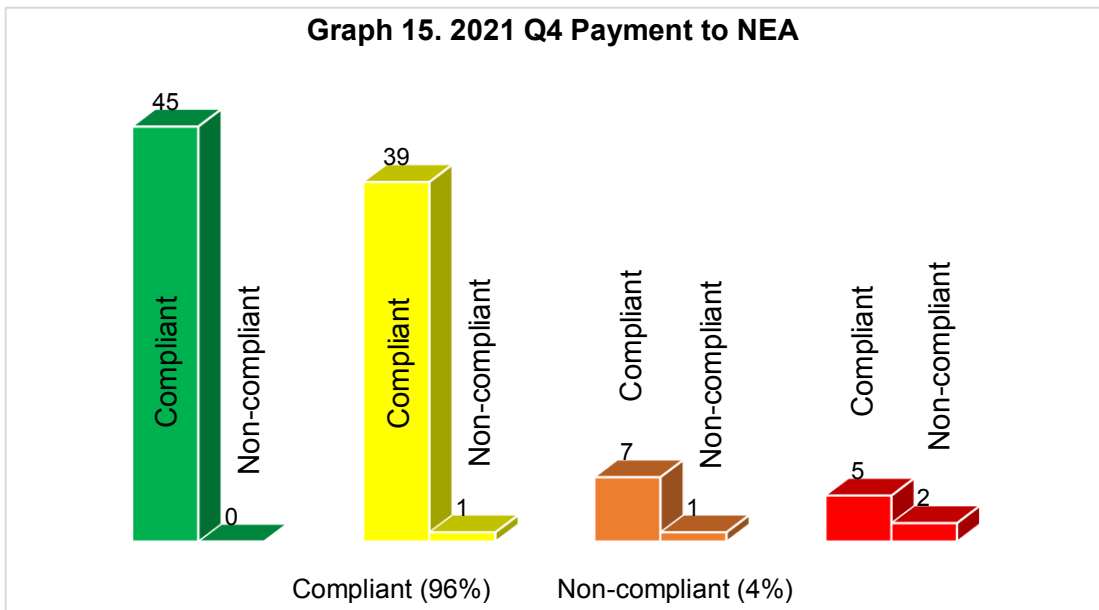


Among the 121 ECs, 21 are labeled as Small Power Utilities Group (SPUG) or off-grid ECs. Among these 21 SPUG ECs, 21 were evaluated, of which 15 ECs or 71% were assessed as compliant (Graph 13). The number of compliant SPUG ECs remained the same for the first three quarters of this year, however, a slight decrease in 4<sup>th</sup> quarter. (Graph 14).

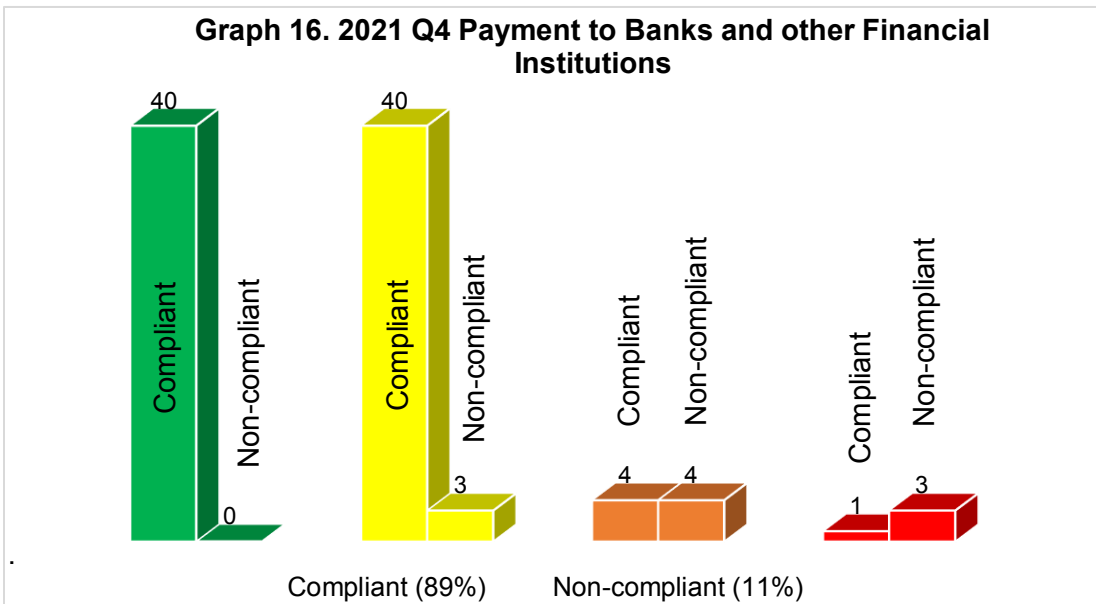
### Payment to Financial Institutions (NEA, Banks and other FIs)

This parameter was included in the 2020 Policy for the Classification of ECs to monitor and measure compliance of ECs on their payment of financial obligations to NEA, Banks and other Financial Institutions (FIs). ECs are marked as “Current” or “Restructured- Current” if they are able to pay their amortizations on time. Contrastively, “Arrears” or “Restructured Arrears” shows the inability of an EC to pay its obligations promptly.

Of the 121 ECs, 100 ECs were assessed on their payment to NEA and the result was 96 ECs were current on their payments while 4 ECs were in arrears or they were not able to pay their obligations on time (Graph 15). 21 ECs were identified to have no financial obligations with NEA.

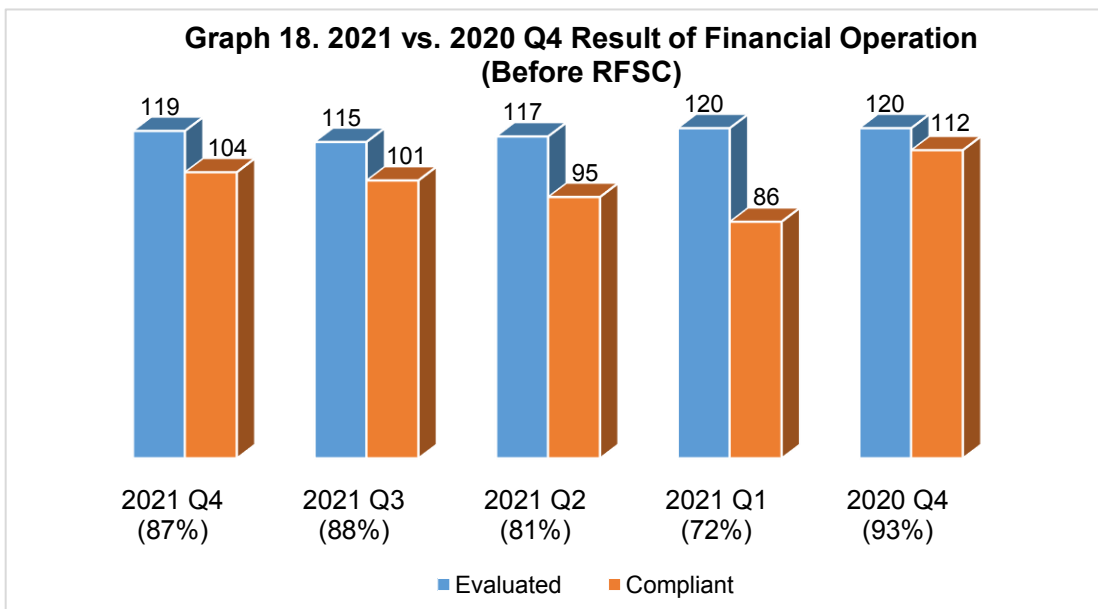
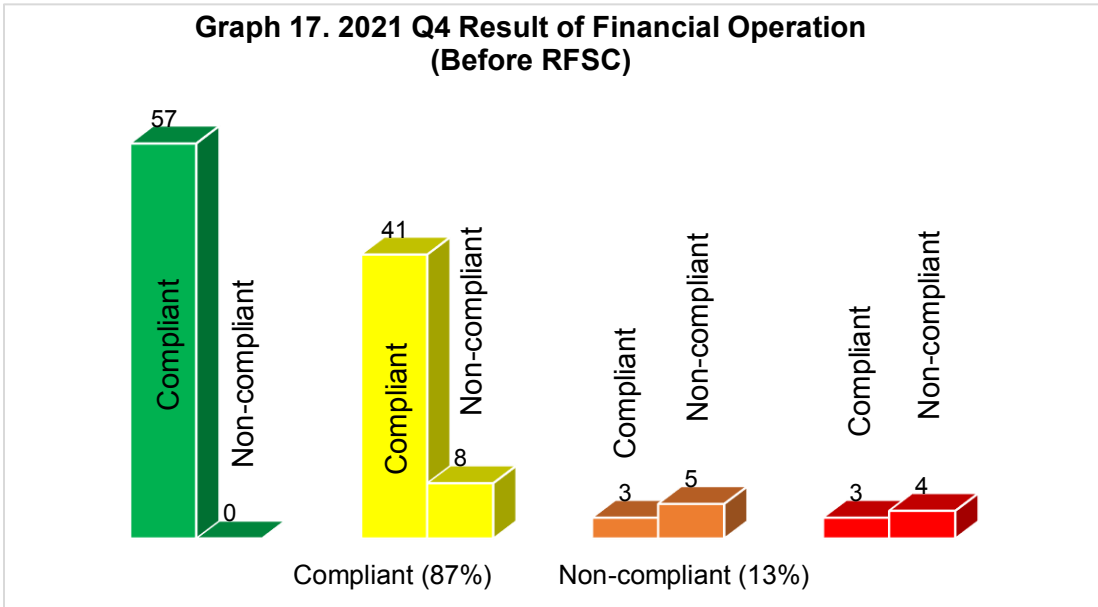


On payment to Banks and other Financial Institutions, out of 121 ECs, 86 ECs were assessed and the result showed that 85 ECs were current while 1 EC is in arrears with its obligations (Graph 16). 26 ECs were identified to have no loans with banks and other FIs for the fourth quarter of 2021.



### Result of Financial Operation (Before RFSC)

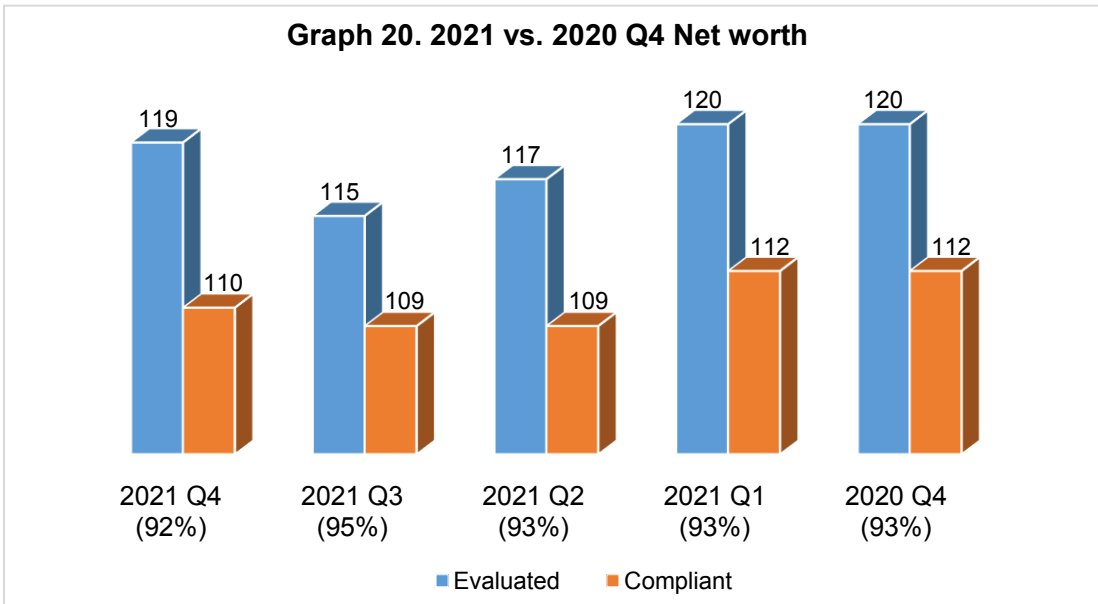
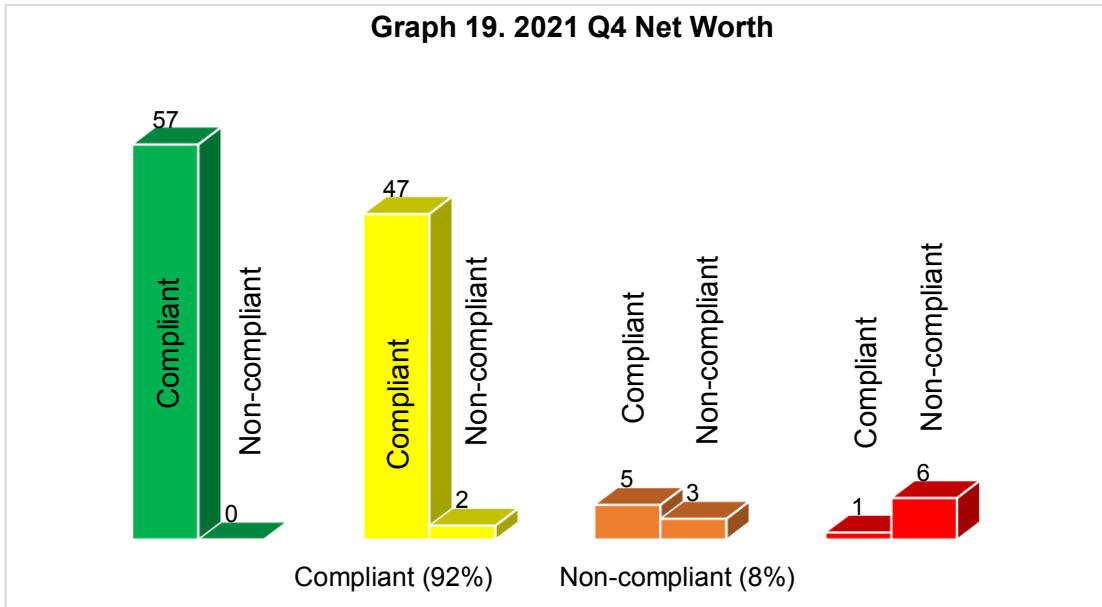
This parameter states the net revenue after deducting all costs and expenses to the total revenue. A positive financial status makes an EC compliant after assessment of performance.



Out of the 119 evaluated ECs, 104 or 87% were compliant, most of which were Green and Yellow-1 ECs (Graph 17). There was an increase in the number of compliant ECs for fourth quarter compared to third quarter of 2021 but there was decrease in the number of compliant ECs for 2021 as compared to 2020 4<sup>th</sup> performance assessment (Graph 18).

## Net Worth

An EC's net worth presents its overall financial state. It refers to the total value of assets after total liabilities. A compliant EC has positive net worth, the condition that assets outweighs the liabilities.



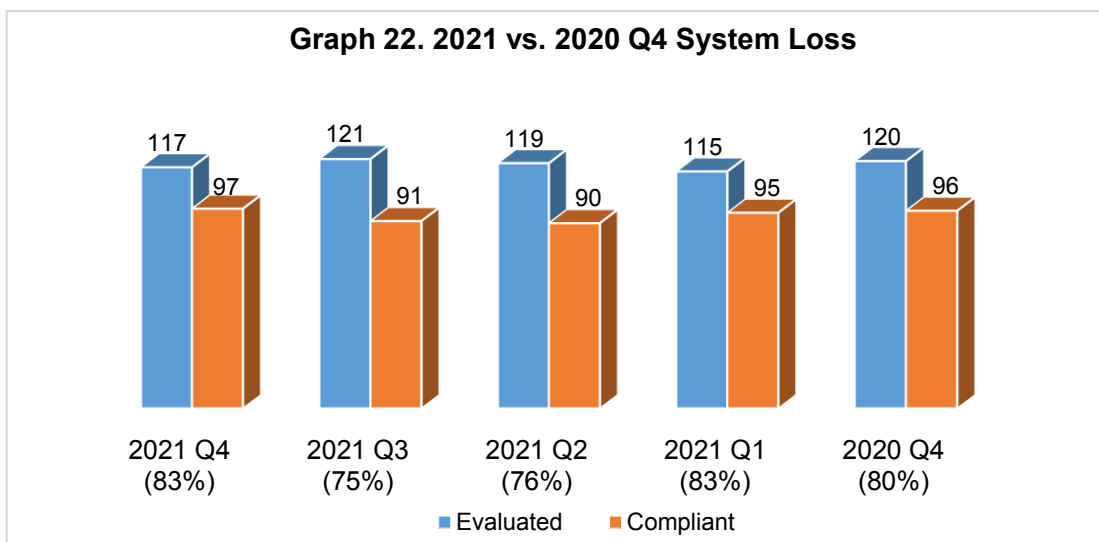
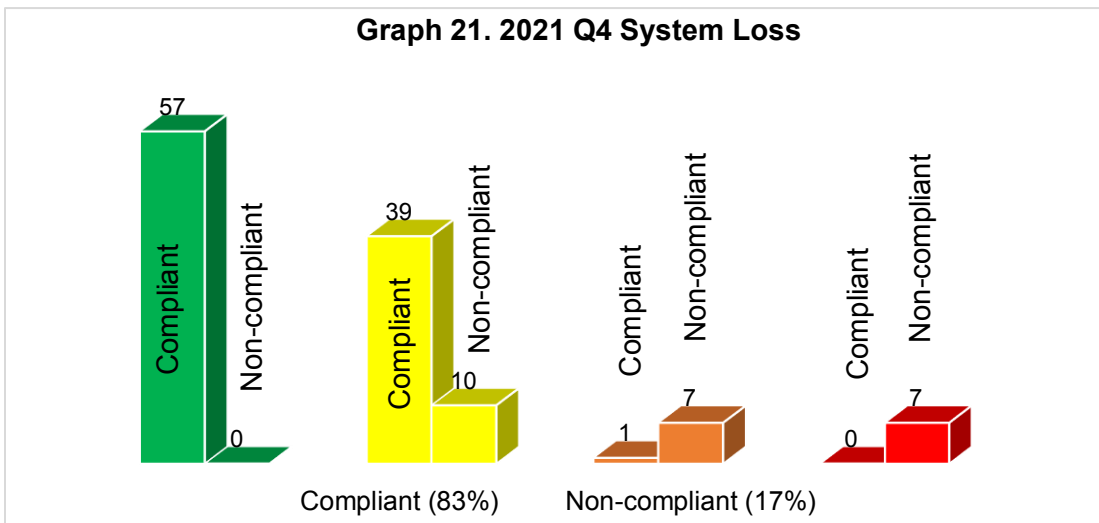
For the ECs' net worth, 110 or 92% out of 119 ECs evaluated have a positive net worth for 2021 fourth quarter financial operations (Graph 19). There is an increase in the number of evaluated ECs for the fourth quarter as compared to the third quarter of 2021 but the percentage level slightly decreased as compared to the fourth quarter of 2020 (Graph 20).

## B. Technical Standards and Parameters

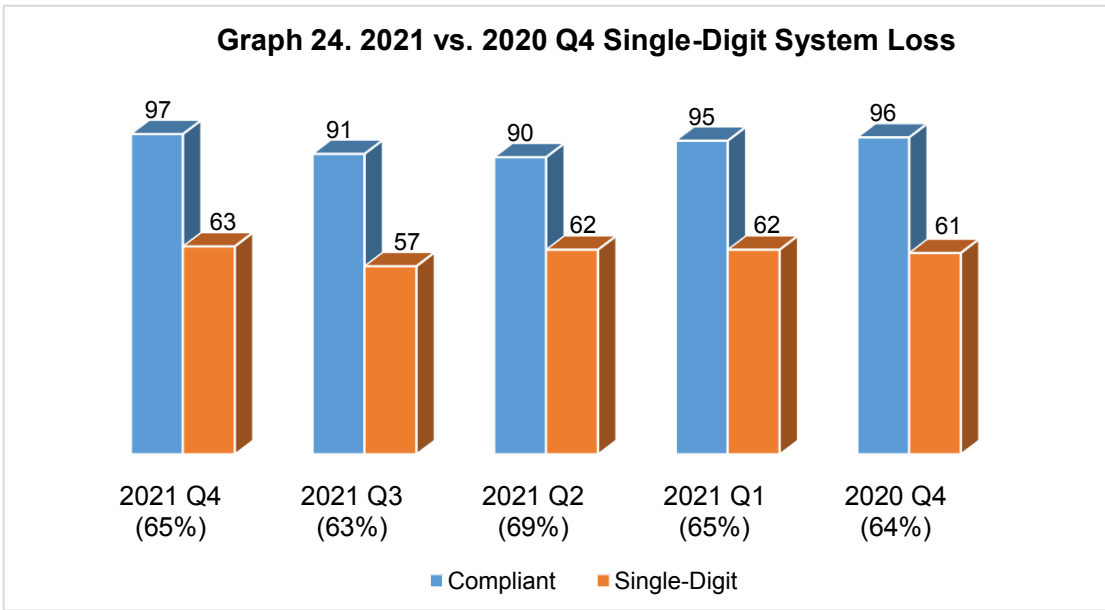
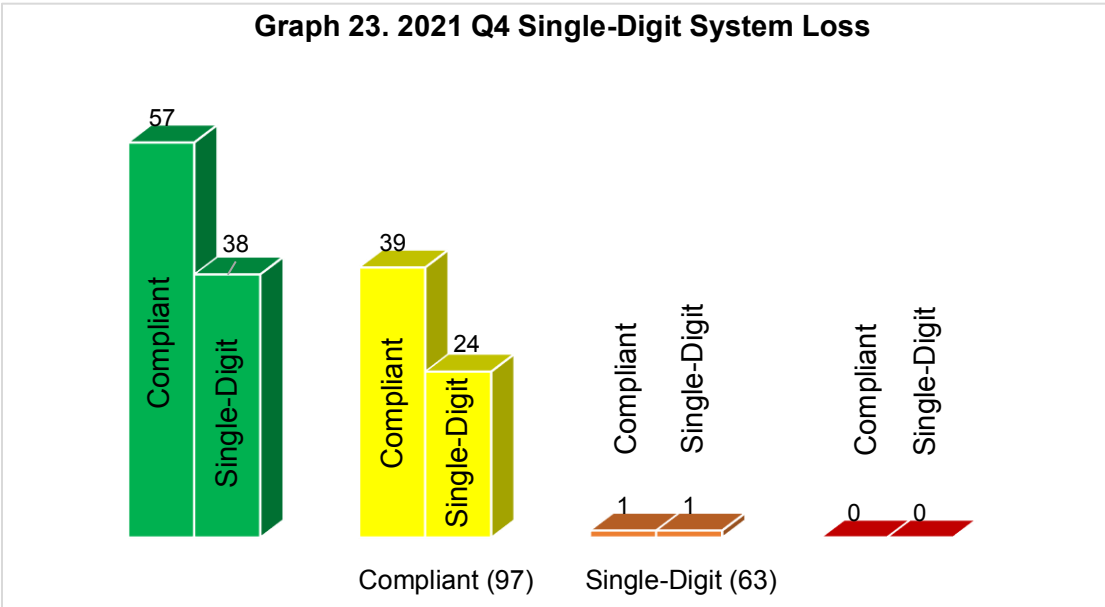
For the technical standards and parameters, two conditions are being considered, system efficiency and power reliability. For classifying ECs based on efficiency, only system loss is being utilized and for power reliability, the System Average Interruption Frequency Index (SAIFI) and System Average Interruption Duration Index (SAIDI). The performance of the ECs is presented in comparison to their performance from the previous year. ECs with incomplete submission or no submission were not evaluated. For system loss percentages, refer to Appendix A and for power reliability values, refer to Appendix B.

### System Loss

This parameter measures the difference between energy input and energy output. It indicates the efficiency of the ECs' distribution system. The standard used for 2021 is 12%.



Out of the 117 evaluated ECs, 97 ECs or 83% were compliant (Graph 21). There is an increase in the number of compliant ECs from 91 of the third quarter to 97 of the fourth quarter, however, the number of evaluated ECs decreased from 121 to 117, respectively (Graph 22).



As more ECs meet the standard in system loss, others continue to improve their system to reduce the loss up to a single-digit level (Graph 23). There is an increase in the number of ECs with single-digit system loss for the fourth quarter or a 2% increase as compared to the third quarter of 2021. (Graph 24).

While the number of compliant ECs in the system loss parameter continued to increase, high system loss continues to be a concern. Some of the causes include:

- a. Pilferages;
- b. Defective meters;
- c. Overloaded system;
- d. Erratic billing cycles;

- e. Delayed implementation of Capital Expenditures project due to regulatory requirements; and
- f. Other concerns such as right of way and old, dilapidated distribution system

To improve the system loss level, the ECs undertake the following programs:

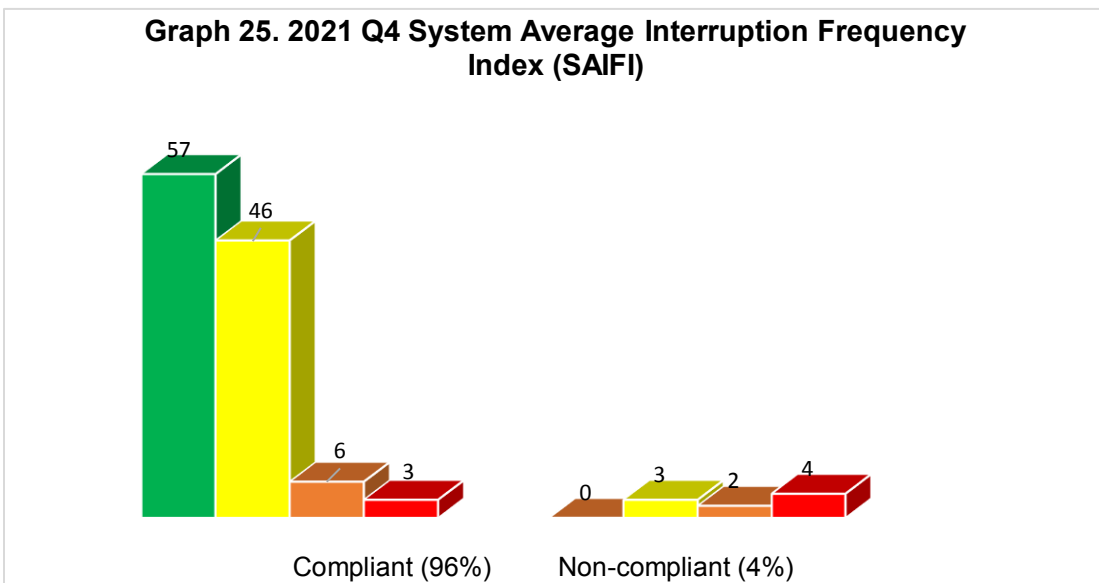
- a. Replacement of defective, malfunctioning, and inoperative kwh meters;
- b. Pole meter clustering;
- c. Vegetation management or right of way clearing;
- d. Line upgrading, line conversion, and line rehabilitation;
- e. Transformer load management which involves load centering of distribution transformer;
- f. Upgrading of overload distribution transformers; and
- g. Strict implementation of Anti-Pilferage and disconnection campaign

**Power Reliability**

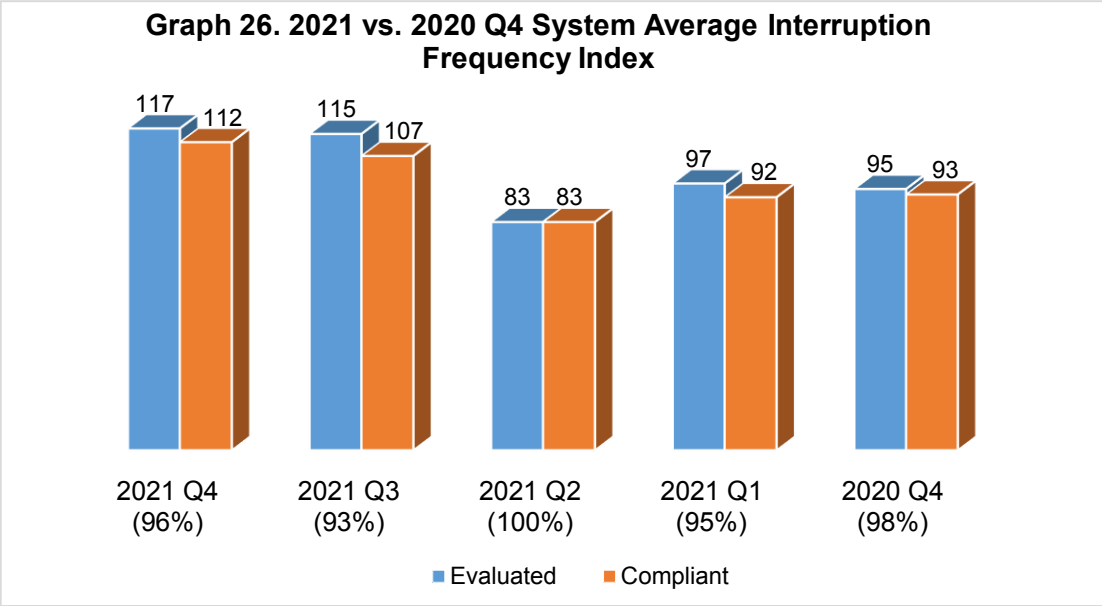
The electric cooperatives’ ability to meet the electricity needs of the end-users is measured by these parameters.

**System Average Interruption Frequency Index (SAIFI)**

This parameter is defined as the total number of sustained customer power interruptions within a given period divided by the total number of customers served within the same period. For on-grid ECs, the standard is 25 interruptions per consumer per year while for off-grid ECs, 30 interruptions. Out of the 121 ECs, 117 ECs were evaluated and 112 were assessed as compliant to the standard (Graph 25).



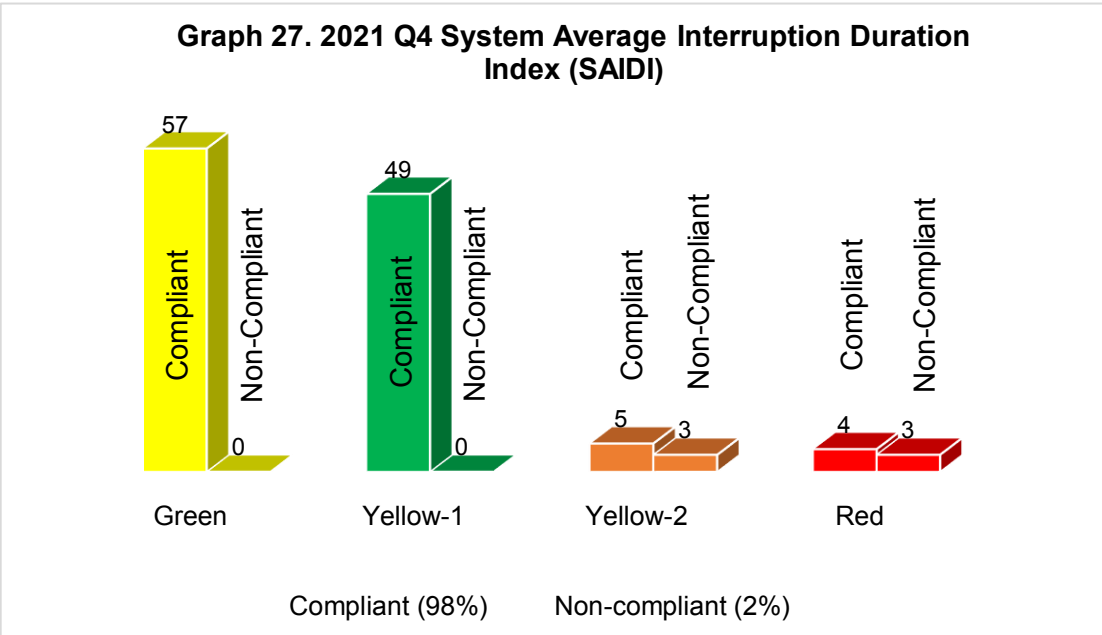


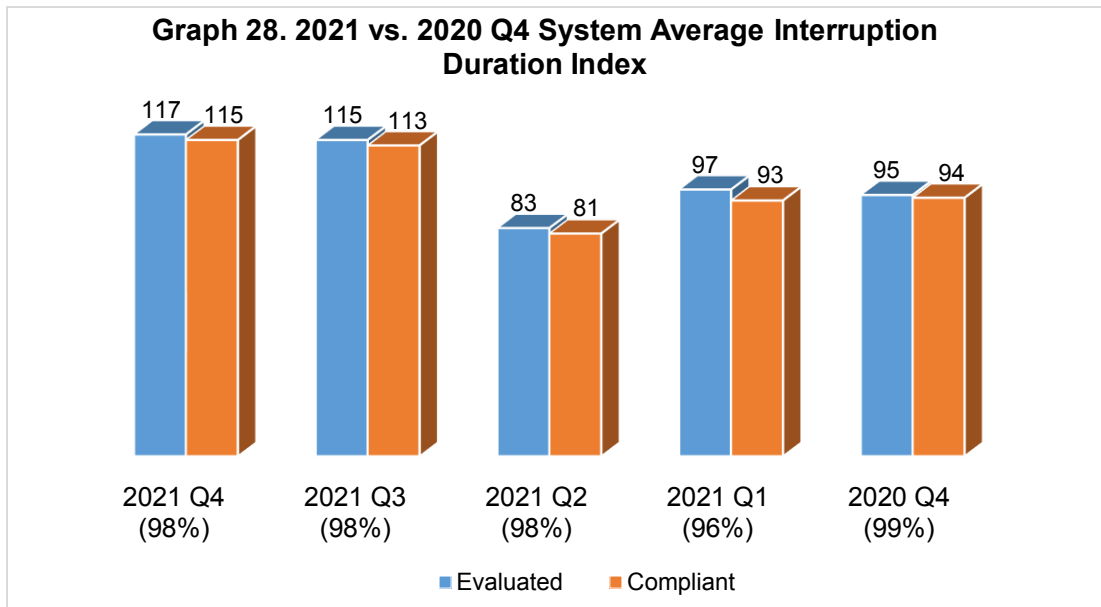


The graph shows that there was an increase in the number of evaluated ECs from 115 of the third quarter to 117 of the fourth quarter. In addition, the number of compliant ECs increased from 107 to 112 for the third and fourth quarter of the same year, respectively. (Graph 26).

**System Average Interruption Duration Index (SAIDI)**

The total duration of sustained customer power interruptions within a given period divided by the total number of customers served within the same period makes up SAIDI. The standard is 2,700 minutes per consumer per year for on-grid ECs while 3,375 minutes per consumer for off-grid ECs. For the fourth quarter of 2021, 117 ECs were evaluated, and the result showed that 115 ECs were compliant or with 98% compliance level (Graph 27). It was also observed that there was an increase in the level of compliance by 2% from the first quarter of 2021 to the second quarter, but has remained the same from the second quarter to the fourth quarter of the same year.





The level of compliance may have varied from different quarters from 4th quarter 2020 to 4<sup>th</sup> quarter 2021, but it has maintained the level above 95% (Graph 28).

**C. Institutional Standards and Parameters**

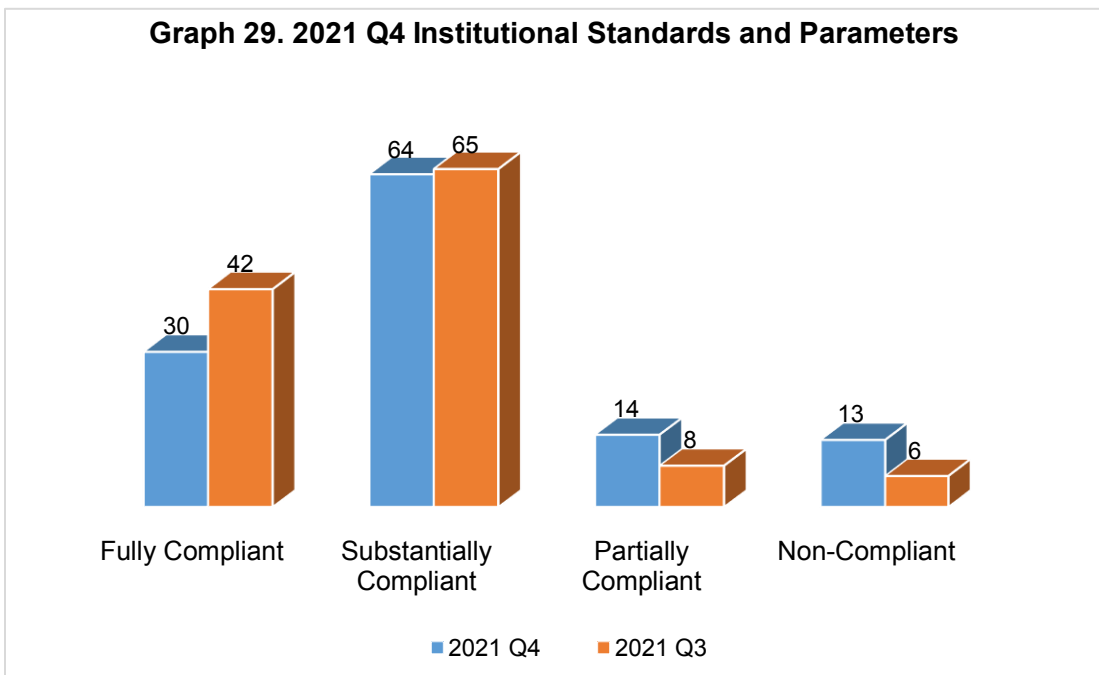
While the institutional norms and principles do not affect the classification of ECs, there are standards and parameters set by the NEA to assess EC performance in relation to management of operations and effective delivery of service to member-consumer-owners. The objective of establishing these institutional requirements is to empower MCOs by promoting active participation and in the activities of the ECs. For 2021, the classification and its corresponding rating was enhanced to demonstrate the actual level of compliance of ECs to the identified parameters. A fully compliant EC must have 100% performance score in the set institutional criteria. In range of 81% to 99%, ECs are considered substantially compliant, 61% to 80%, partially compliant while ECs with 60% and below are considered non-compliant.

The bases of the assessment are good governance, leadership/ management, and stakeholders (Table 7). For overall institutional ratings, see Appendix C.

**Table 7.** Institutional Standards and Parameters Criteria

Parameter	Weight
<b>Good Governance.</b>	<b>50%</b>
Cash Advances/Power Account Payable	10%
Board of Directors Attendance	10%
Continuing Qualifications	10%
Absence of Verified Complaint	5%
Organizational Restructuring	5%
IT Infrastructure	5%
Audit Rating	5%
<b>Leadership and Management</b>	<b>20%</b>
Employee-Consumer Ratio	10%
Availability of Retirement Fund	10%
<b>Stakeholders</b>	<b>30%</b>
Customer Service Standards	14%
Conduct of AGMA	6%
District Election	6%
Action on Consumer Complaint	4%
<b>Total</b>	<b>100%</b>

For this quarter, 30 ECs are fully compliant, 64 are substantially compliant, 14 are partially compliant, and 13 are non-compliant. In comparison with the previous quarter's data, we can observe that there is a slight decrease in the number of fully and substantially compliant ECs (Graph 29).



#### IV. Status of Rural Electrification Program

The objective of the Rural Electrification Program is to provide electricity through the ECs in accordance to the National Electrification Administration mandate “to pursue the total electrification of the country”.

When the Rural Electrification Program started in 1969, the level of electrification was at 19% and was only concentrated in cities and major economic centers. With the partnership of the government through the National Electrification Administration and its implementing arms, the electric cooperatives, the electrification level continued to rise. To account for the level of accomplishments, the Philippine Statistics Authority’s 2015 Census of Population was used as a basis for potential consumers.

For the fourth quarter of 2021, 99 out of 121 ECs are with 91% and above energization level. Of the 99 ECs, 85 have 100% accomplishment. The majority of ECs with 100% energization level are Green and Yellow-1 ECs with 49 and 33, respectively, while Yellow-2 and Red had 1 EC and 2 ECs, respectively. On the other hand, 9 ECs have a level of energization below 70%, most of which come from Red ECs (Table 8). There are a total of 11 ECs who attained 100% energization for 2021 (Table 9). For a more comprehensive data, refer to Appendix D.

**Table 8.** 2021 Q4 Energization Level

Energization Level	EC Classification				Total	%
	Green	Yellow-1	Yellow-2	Red		
100	49	33	1	2	85	70
97-99	3	1	1	0	5	4
94-96	0	3	0	0	3	2
91-93	0	6	0	0	6	5
88-90	3	2	0	0	5	4
85-87	0	2	0	0	2	2
82-84	1	1	0	0	2	2
79-81	0	0	1	0	1	1
76-78	0	1	1	0	2	2
73-75	0	0	1	0	1	1
70-72	0	0	0	0	0	0
Below 70	1	0	3	5	9	7
Total	57	49	8	7	121	100

**Table 9.** 2021 ECs with 100% Energization Level

ECs attained 100% Energization Level for 2021				
1 <sup>ST</sup> Quarter	2 <sup>ND</sup> Quarter	3 <sup>RD</sup> Quarter		4 <sup>TH</sup> Quarter
CASURECO I	NEECO II – AREA 2	CAGELCO II	GUIMELCO	BISELCO
	CASURECO III	BENECO	SAMELCO II	ILECO III
		ALECO	ESAMELCO	

## V. Appendices

### Appendix A: Electric Cooperatives Performance Assessment Sheet

Green Electric Cooperatives Performance Assessment Sheet															
(As of December 31, 2021)															
Electric Cooperatives	Cash General Fund		Collection Efficiency (%)	Accounts Payable				Result of Financial Operation (Before RFSC)*	Net Worth			System Loss (%)	System Reliability		Energization Level (%)
	Working Capital Fund*	One Month Working Capital Requirement*		Power		Financial Institutions			2021 Net Worth*	2020 Net Worth*	2019 Net Worth*		SAIFI	SAIDI	
				GENCO	NGCP	NEA	BANKS								
<b>Region I - Ilocos Region</b>															
ISECO	509,592	226,809	99.46	Current	Current	Current	N/A	25,237	1,334,002	1,392,410	1,243,825	9.06%	8.19	525.18	100.00
LUELCO	263,533	175,794	97.17	Current	Current	Current	Current	96,296	1,206,083	1,178,005	1,127,561	10.06%	2.25	236.46	100.00
PANELCO III	631,165	297,922	96.01	Current	Current	N/A	Current	154,510	2,211,514	2,044,726	1,895,181	9.07%	1.07	11.48	100.00
<b>Region II - Cagayan Valley</b>															
CAGELCO II	451,474	155,365	100.00	Current	Current	Current	Current	13,185	1,368,968	1,287,954	1,160,738	10.28%	7.50	473.50	100.00
QUIRELCO	131,134	40,360	100.00	Current	Current	N/A	Current	33,624	537,008	511,146	480,112	11.88%	5.07	224.42	100.00
<b>CAR - Cordillera Administrative Region</b>															
MOPRECO	69,957	21,972	100.00	Current	Current	Current	N/A	6,888	455,738	461,582	440,266	10.22%	6.39	834.50	100.00
<b>Region III - Central Luzon</b>															
AURELCO	169,750	49,557	97.59	Res.Current	Current	Current	Current	81,014	673,906	598,932	512,852	8.29%	2.55	239.94	100.00
TARELCO II	578,908	233,590	95.00	Current	Current	N/A	N/A	159,882	1,862,480	1,752,003	1,564,512	8.10%	9.39	327.93	100.00
NEECO I	489,260	161,192	98.01	Current	Current	N/A	N/A	21,629	1,088,828	1,092,157	1,033,892	9.35%	9.15	231.14	100.00
NEECO II - AREA 1	506,588	178,600	99.08	Current	Current	Current	N/A	116,728	1,070,902	974,152	884,478	9.65%	9.75	803.92	100.00
NEECO II - AREA 2	638,074	166,715	96.65	Current	Current	Current	N/A	229,084	1,475,212	1,276,241	1,159,509	8.15%	8.27	434.47	100.00
PRESCO	92,881	57,826	97.15	Res.Current	Current	N/A	Current	31,030	257,009	252,243	224,923	10.57%	2.82	221.90	100.00
PELCO I	1,078,615	205,209	98.27	Current	Current	N/A	N/A	114,300	2,608,638	2,444,082	2,142,938	7.21%	4.30	274.36	100.00
PELCO II	564,335	390,835	97.81	Current	Current	N/A	Current	326,059	74,383	-251,648	-619,847	10.44%	9.29	561.00	100.00
PENELCO	625,779	479,981	95.16	Current	Current	Current	Current	88,155	2,664,503	2,650,560	2,381,669	5.97%	1.88	139.90	100.00
<b>Region IV-A - CALABARZON</b>															
FLECO	95,716	82,827	99.30	Current	Current	Current	N/A	59,138	629,614	602,242	624,539	9.19%	5.62	185.39	100.00
BATELEC II	1,501,570	579,862	98.21	Current	Current	Current	Current	515,082	4,986,609	4,453,451	4,033,661	9.10%	6.40	329.83	100.00
QUEZELCO II	131,107	38,359	99.39	Current	Current	Current	Current	27,162	489,689	472,116	451,463	7.76%	3.86	315.11	90.77
<b>Region IV-B - MIMAROPA</b>															
OMECO	132,984	79,380	95.50	Res.Current	N/A	Current	Current	90,248	678,722	599,516	544,358	11.91%	21.83	895.23	88.66
TIELCO	33,487	31,297	100.00	Current	N/A	Current	Current	11,969	225,577	236,245	228,815	8.21%	9.76	551.53	100.00
ROMELCO	27,928	17,907	95.73	Current	N/A	Current	Current	13,052	450,304	403,156	395,932	10.21%	8.56	161.29	100.00
<b>Region V - Bicol Region</b>															
CANORECO	293,019	150,911	95.08	Current	Current	Current	Current	87,269	878,449	837,982	731,372	8.46%	5.86	117.81	100.00
CASURECO I	91,575	65,520	100.00	Current	Current	Current	Current	15,996	965,265	930,749	936,379	9.48%	10.10	708.65	100.00
CASURECO IV	183,069	44,791	98.57	Current	Current	Current	Current	30,482	992,382	919,493	901,459	9.46%	9.19	434.98	100.00
FICELCO	45,330	42,190	97.94	Current	N/A	Current	Current	17,362	221,366	254,852	212,623	10.95%	26.24	2,645.91	100.00
<b>Region VI - Western Visayas</b>															
CAPELCO	376,040	209,502	97.17	Current	Current	Current	Current	77,314	1,294,726	1,196,836	1,167,506	10.20%	5.08	536.84	100.00
ILECO I	1,348,306	256,776	95.09	Current	Current	Current	Current	208,539	2,119,677	1,935,005	1,737,795	7.62%	7.34	80.33	100.00
ILECO III	275,615	96,938	99.65	Current	Current	Current	Current	72,704	695,745	622,970	552,495	7.37%	9.40	160.93	100.00
GUIMELCO	35,648	33,399	97.01	Current	Current	Current	N/A	57,862	516,580	502,488	459,634	8.86%	2.40	207.72	100.00
NOCECO	508,605	223,011	96.82	Current	Current	N/A	Current	83,834	1,720,003	1,611,646	1,551,278	10.25%	8.03	617.53	83.40

## Appendix A: Electric Cooperatives Performance Assessment Sheet

Green Electric Cooperatives Performance Assessment Sheet															
(As of December 31, 2021)															
Electric Cooperatives	Cash General Fund		Collection Efficiency (%)	Accounts Payable				Result of Financial Operation (Before RFSC)*	Net Worth			System Loss (%)	System Reliability		Energization Level (%)
	Working Capital Fund*	One Month Working Capital Requirement*		Power		Financial Institutions			2021 Net Worth*	2020 Net Worth*	2019 Net Worth*		SAIFI	SAIDI	
				GENCO	NGCP	NEA	BANKS								
<b>Region VII - Central Visayas</b>															
BANELCO	64,586	29,591	99.07	Res.Current	N/A	Current	N/A	19,739	457,389	431,063	428,852	8.88%	19.94	936.26	100.00
CEBECO I	571,267	158,914	100.00	Res.Current	Res.Current	N/A	Current	78,681	1,489,902	1,416,325	1,304,637	8.64%	10.46	741.52	100.00
CEBECO II	667,915	222,463	96.36	Current	Current	N/A	Current	185,666	2,118,592	1,928,075	1,736,571	7.98%	6.21	1,428.62	100.00
CEBECO III	365,640	104,925	100.00	Current	Current	N/A	Current	24,506	875,412	883,047	828,433	8.61%	6.08	334.43	100.00
PROSIELCO	50,031	20,499	100.00	Current	N/A	Current	N/A	808	180,354	181,823	181,356	7.45%	26.17	1892.85	100.00
CELCO	49,514	14,072	99.80	Current	N/A	Current	N/A	6,435	182,449	176,388	172,937	7.55%	25.72	718.61	100.00
BOHECO II	178,120	113,443	97.32	Res.Current	Current	Current	Current	6,257	703,608	706,518	706,752	11.11%	5.01	816.67	100.00
<b>Region VIII - Eastern Visayas</b>															
DORELCO	130,819	67,908	95.66	Current	Current	Current	N/A	43,798	672,512	679,940	647,537	8.75%	0.99	57.76	99.18
LEYECO II	332,814	180,601	95.84	Res.Current	Res.Current	N/A	N/A	82,022	851,632	868,047	779,649	4.44%	3.85	291.33	100.00
LEYECO III	74,898	48,128	95.42	Current	Current	Current	Current	31,150	426,554	457,710	417,183	8.94%	2.73	48.43	100.00
LEYECO IV	193,628	65,040	95.82	Current	Current	Current	N/A	20,184	676,812	652,482	591,743	9.97%	10.18	596.40	100.00
SOLECO	395,625	93,222	96.92	Current	Current	Current	Current	51,822	1,483,352	1,432,119	1,339,572	11.37%	14.40	1,109.73	100.00
BILECO	146,361	35,821	97.10	Res.Current	Current	Current	N/A	13,861	452,405	391,445	367,704	11.66%	20.63	1,335.54	100.00
SAMELCO I	70,216	55,044	100.00	Current	Current	Current	Current	87,620	407,621	425,993	441,455	4.86%	3.71	75.66	100.00
SAMELCO II	181,311	71,265	100.00	Current	Current	Current	Current	39,999	960,961	933,263	869,871	10.59%	10.41	492.59	100.00
ESAMELCO	147,414	77,712	100.00	Current	Current	Current	Current	42,079	1,298,660	1,219,354	1,254,522	7.93%	13.04	1,696.30	100.00
<b>Region IX - Zamboanga Peninsula</b>															
ZAMSURECO I	338,017	212,249	99.68	Current	Current	Current	Current	92,198	1,885,916	1,761,606	1,684,299	10.68%	9.73	918.60	89.52
<b>Region X - Northern Mindanao</b>															
MORESCO I	284,643	272,689	96.89	Current	Current	Current	Current	27,684	1,782,860	1,706,011	1,562,843	4.26%	7.94	522.95	100.00
MORESCO II	137,326	123,565	96.93	Res.Current	Current	Current	Current	32,385	450,217	519,653	606,542	9.29%	21.76	2,346.32	98.73
BUSECO	157,800	154,519	100.00	Current	Current	Current	Current	60,617	1,403,933	1,300,148	1,110,371	9.24%	7.32	499.90	100.00
<b>Region XII - SOCCSKSARGEN</b>															
COTELCO	300,457	182,855	97.88	Current	Current	Current	Current	2,294	1,704,598	1,621,733	1,638,506	9.84%	12.49	208.33	99.53
COTELCO-PPALMA	145,577	78,930	98.43	Current	Current	Current	Current	27,799	489,884	487,774	603,650	10.25%	0.71	4.67	66.65
<b>Region XIII - CARAGA</b>															
ANECO	360,047	258,635	97.48	Current	Current	Current	Current	90,234	1,258,688	1,139,009	1,185,090	9.86%	8.55	455.16	100.00
SIARELCO	141,770	27,474	100.00	Current	Current	Current	Current	29,576	384,797	351,173	326,252	7.82%	4.04	454.33	100.00
DIELCO	100,113	13,008	97.87	Current	N/A	Current	N/A	20,833	277,261	253,337	229,087	2.03%	2.47	57.92	100.00
SURSECO I	68,605	52,717	98.19	Current	Current	Current	Current	29,208	615,804	602,572	590,333	10.66%	6.40	942.16	100.00
SURSECO II	85,195	80,813	97.99	Current	Current	Current	Current	25,037	478,437	464,384	390,336	10.89%	16.22	749.06	100.00

Note: \* - In Thousand Pesos

## Appendix A: Electric Cooperatives Performance Assessment Sheet

Yellow-1 Electric Cooperatives Performance Assessment Sheet															
(As of December 31, 2021)															
Electric Cooperatives	Cash General Fund		Collection Efficiency (%)	Accounts Payable				Result of Financial Operation (Before RFSC)*	Net Worth			System Loss (%)	System Reliability		Energization Level (%)
	Working Capital Fund*	One Month Working Capital Requirement*		Power		Financial Institutions			2021 Net Worth*	2020 Net Worth*	2019 Net Worth*		SAIFI	SAIDI	
				GENCO	NGCP	NEA	BANKS								
<b>Region I - Ilocos Region</b>															
INEC	148,108	227,211	100.00	Res.Current	Current	Current	Current	9,402	691,794	776,175	1,176,665	8.12%	7.02	558.51	100.00
PANELCO I	223,727	103,412	100.00	Res.Current	Current	N/A	Current	-9,665	725,564	805,987	787,288	12.45%	28.71	1,919.21	100.00
CENPELCO	119,517	347,133	89.04	Res.Current	Current	Current	Current	-53,938	1,805,742	1,860,220	1,742,770	8.31%	8.36	398.25	100.00
<b>Region II - Cagayan Valley</b>															
BATANELCO	8,863	8,487	92.34	Current	N/A	Current	N/A	3,495	378,032	368,632	352,381	3.82%	7.67	677.20	100.00
CAGELCO I	486,312	224,991	97.60	Current	Current	Current	Current	-72,156	1,101,162	1,280,720	1,143,113	8.65%	3.11	106.35	100.00
ISELCO I	484,808	354,016	93.95	Current	Current	Current	Current	143,470	1,097,558	1,279,474	914,718	10.33%	6.75	311.53	100.00
ISELCO II	189,764	246,249	87.88	Current	Current	Current	Current	47,732	1,371,973	1,351,965	1,129,218	10.12%	19.38	704.97	100.00
NUVELCO	100,825	125,371	82.34	Current	Current	N/A	Current	123,160	1,606,537	1,416,278	1,303,456	6.28%	8.88	606.59	100.00
<b>CAR - Cordillera Administrative Region</b>															
IFELCO	32,075	24,675	87.37	Current	Current	Current	Current	16,753	564,858	566,088	551,573	13.92%	22.48	1291.96	100.00
KAELCO	54,698	46,273	74.69	Res.Current	Current	Current	Current	-12,028	653,133	681,974	633,394	13.55%	0.53	43.04	93.44
<b>Region III - Central Luzon</b>															
TARELCO I	974,467	260,117	90.98	Current	Current	Current	N/A	61,453	1,769,244	1,712,744	1,562,727	7.60%	13.19	732.18	100.00
SAJELCO	186,516	84,295	94.96	Res.Current	Current	N/A	Current	55,431	559,970	508,681	508,476	8.58%	1.38	29.37	100.00
PELCO III	185,046	162,596	95.58	Res.Arrears	Current	Current	Current	49,571	-247,718	-334,259	-64,214	7.21%	2.14	97.95	100.00
ZAMECO I	268,458	95,487	94.23	Res.Current	Current	Current	Current	60,301	841,710	757,186	640,875	8.78%	15.17	666.94	100.00
ZAMECO II	145,829	140,108	94.13	Res.Current	Current	Current	Current	47,169	1,092,872	862,545	809,634	9.02%	11.14	364.72	100.00
<b>Region IV-A - CALABARZON</b>															
BATELEC I	320,633	291,235	94.33	Current	Current	N/A	N/A	96,318	1,314,066	1,314,819	1,608,475	9.92%	6.32	388.09	100.00
QUEZELCO I	263,157	156,807	97.46	Current	Current	Current	Current	47,633	1,444,917	1,365,476	1,286,809	13.10%	6.60	206.64	92.29
<b>Region IV-B - MIMAROPA</b>															
LUBELCO	7,314	4,161	100.00	Current	N/A	Current	dns	5,816	86,925	73,157	88,686	8.52%	32.54	2,950.22	100.00
ORMECO	145,017	197,560	95.73	Current	N/A	Current	dns	127,075	2,150,051	1,915,748	1,838,032	10.70%	18.33	1,026.85	100.00
MARELCO	23,576	37,985	100.00	Current	N/A	Current	Current	20,497	393,020	375,821	361,168	8.76%	23.17	1,813.87	100.00
BISELCO	35,920	17,560	100.00	Arrears	N/A	Current	Current	231	413,983	393,544	324,491	**14.37%	23.23	1,499.04	100.00
PALECO	662,703	192,158	90.08	Current	N/A	N/A	Current	113,133	1,118,354	1,060,366	1,055,427	9.37%	29.46	2,516.62	86.78
<b>Region V - Bicol Region</b>															
CASURECO II	546,881	268,014	100.00	Res.Current	Current	N/A	N/A	103,770	622,932	650,360	684,357	10.73%	37.60	1,144.88	100.00
CASURECO III	122,815	102,900	95.85	Res.Current	Current	Current	Current	67,350	-119,672	-181,430	-265,459	11.95%	14.01	458.07	100.00
SORECO I	50,958	49,378	91.10	Current	Current	Current	Current	109,397	422,525	401,228	341,085	9.99%	11.84	783.88	100.00
SORECO II	232,986	102,566	93.95	Res.Current	Current	Current	Current	205,004	700,184	848,672	765,898	11.66%	8.72	540.40	100.00
TISELCO	7,643	7,357	73.63	Res.Current	N/A	Current	dns	18,124	156,265	145,831	dns	8.83%	15.27	161.61	93.52

## Appendix A: Electric Cooperatives Performance Assessment Sheet

Yellow-1 Electric Cooperatives Performance Assessment Sheet															
(As of December 31, 2021)															
Electric Cooperatives	Cash General Fund		Collection Efficiency (%)	Accounts Payable				Result of Financial Operation (Before RFSC)*	Net Worth			System Loss (%)	System Reliability		Energization Level (%)
	Working Capital Fund*	One Month Working Capital Requirement*		Power		Financial Institutions			2021 Net Worth*	2020 Net Worth*	2019 Net Worth*		SAIFI	SAIDI	
				GENCO	NGCP	NEA	BANKS								
<b>Region VI - Western Visayas</b>															
AKELCO	231,753	199,028	93.14	Current	Current	Current	Current	-95,127	1,105,489	1,167,231	1,328,288	10.64%	18.20	774.35	100.00
ANTECO	216,749	98,725	92.45	Current	Current	N/A	Current	104,022	1,727,225	1,614,415	1,597,847	8.34%	7.49	484.94	100.00
ILECO II	543,612	159,730	94.76	Current	Current	Current	Current	131,855	1,426,060	1,381,898	1,291,781	10.76%	22.85	1,033.79	94.06
NONECO	223,982	199,046	98.13	Current	Current	Current	Current	-5,809	759,944	931,851	947,298	10.69%	4.25	428.87	92.80
CENECO	1,245,526	571,000	93.27	Res.Current	Current	Current	Current	246,701	3,328,558	3,173,626	3,101,602	11.23%	10.04	374.43	100.00
<b>Region VII - Central Visayas</b>															
NORECO I	149,633	67,801	94.88	Res.Current	Res.Current	Arrears	Current	10,346	651,736	596,996	562,374	10.72%	21.64	1,274.82	78.32
NORECO II	640,907	241,557	93.98	Current	Current	N/A	N/A	82,029	1,789,005	1,660,264	1,593,000	12.25%	15.82	589.11	100.00
BOHECO I	547,419	147,327	94.78	Current	Current	Current	Current	44,562	1,425,381	1,399,623	1,325,387	5.72%	9.94	865.05	100.00
<b>Region VIII - Eastern Visayas</b>															
LEYECO V	312,696	154,051	93.37	Current	Res.Current	Current	Current	64,492	1,667,555	1,713,894	1,570,462	7.55%	4.07	259.57	97.91
NORSAMELCO	67,995	88,961	99.48	Current	Current	Current	Current	45,594	341,861	355,622	512,078	9.89%	6.44	312.31	90.43
<b>Region IX - Zamboanga Peninsula</b>															
ZANECO	90,578	198,748	96.56	Res.Current	Current	Current	Current	-13,167	994,421	1,084,439	957,620	10.23%	18.90	1,036.22	87.05
<b>Region X - Northern Mindanao</b>															
MOELCI I	63,774	56,727	96.60	Current	Current	Current	Current	2,532	282,018	276,133	272,080	13.40%	18.15	1,698.85	100.00
MOELCI II	105,055	135,769	94.28	Current	Current	N/A	N/A	5,604	351,040	370,076	332,973	9.92%	13.08	703.49	100.00
CAMELCO	28,714	21,112	97.30	Res.Current	Current	Current	Current	25,436	369,794	373,733	349,450	14.01%	20.04	643.97	100.00
LANECO	73,772	89,029	98.12	Current	Current	Current	Current	29,052	479,822	459,313	431,718	11.47%	9.88	328.11	89.80
<b>Region XI - Davao Region</b>															
DORECO	26,543	106,868	92.46	Current	Current	Current	Current	11,683	586,988	566,738	540,848	16.00%	17.05	454.95	95.35
DASURECO	382,415	302,178	94.27	Current	Current	Current	Current	75,116	2,435,233	2,345,250	2,007,942	9.59%	20.09	1,055.87	92.11
<b>Region XII - SOCCSKSARGEN</b>															
SOCOTECO I	581,423	224,579	100.00	Current	Current	Current	Current	46,936	1,522,172	1,462,002	1,412,988	14.80%	14.52	734.31	84.37
SOCOTECO II	364,520	630,024	93.32	Current	Current	Current	Current	-37,842	1,938,408	1,978,747	1,774,039	10.28%	11.64	498.41	91.05
SUKELCO	182,809	154,442	90.45	Current	Current	Current	Current	31,944	1,336,036	1,452,650	1,425,909	9.20%	9.85	221.77	95.78
<b>Region XIII - CARAGA</b>															
ASELCO	168,326	202,246	95.33	Res.Current	Current	Current	Current	43,146	1,598,266	1,532,341	1,535,073	9.17%	14.13	545.19	100.00
SURNECO	14,021	141,659	93.95	Current	Current	Current	Current	155	367,243	409,853	425,646	10.28%	11.55	904.70	100.00

Note: \* - In Thousand Pesos



## Appendix A: Electric Cooperatives Performance Assessment Sheet

Yellow-2 Electric Cooperatives Performance Assessment Sheet															
(As of December 31, 2021)															
Electric Cooperatives	Cash General Fund		Collection Efficiency (%)	Accounts Payable				Result of Financial Operation (Before RFSC)*	Net Worth			System Loss (%)	System Reliability		Energization Level (%)
	Working Capital Fund*	One Month Working Capital Requirement*		Power		Financial Institutions			2021 Net Worth*	2020 Net Worth*	2019 Net Worth*		SAIFI	SAIDI	
				GENCO	NGCP	NEA	BANKS								
<b>CAR - Cordillera Administrative Region</b>															
BENECO	dns	dns	dns	Current	Current	Current	dns	dns	dns	2,314,908	2,214,907	**13.51%	9.00	1,205.49	100.00
<b>Region IX - Zamboanga Peninsula</b>															
ZAMSURECO II	24,951	126,650	89.56	Arrears	Current	Current	Current	-69,933	-41,610	29,094	309,173	17.58%	9.64	863.68	73.40
ZAMCELCO	1,462,101	467,570	91.50	Res.Arrears	Current	Current	dns	-363,702	1,179,856	1,656,349	2,020,998	23.31%	2.93	101.87	81.82
<b>Region X - Northern Mindanao</b>															
FIBECO	177,284	181,669	91.96	Arrears	Current	Current	Current	16,009	1,067,091	736,649	802,031	13.27%	3.22	159.33	99.41
<b>Region XI - Davao Region</b>															
DANECO	601,857	428,355	61.85	Res.Arrears	Current	Current	Current	-313,826	1,819,864	2,083,922	2,103,842	14.29%	14.59	20,074.47	77.16
<b>ARMM - Autonomous Region in Muslim Mindanao</b>															
SIASELCO	8,196	3,798	76.31	Current	N/A	Current	dns	2,986	106,818	88,528	100,739	dns	dns	dns	24.81
CASELCO	9,549	1,420	87.08	Res.Arrears	N/A	Current	dns	3,870	41,157	dns	dns	dns	dns	dns	67.42
MAGELCO	dns	dns	dns	Arrears	Res.Arrears	Arrears	Current	dns	dns	1,040,441	-373,183	8.38%	22.52	2,118.88	37.09
Note: * - In Thousand Pesos															

## Appendix A: Electric Cooperatives Performance Assessment Sheet

Red Electric Cooperatives Performance Assessment Sheet															
(As of December 31, 2021)															
Electric Cooperatives	Cash General Fund		Collection Efficiency (%)	Accounts Payable				Result of Financial Operation (Before RFSC)*	Net Worth			System Loss (%)	System Reliability		Energization Level (%)
	Working Capital Fund*	One Month Working Capital Requirement*		Power		Financial Institutions			2021 Net Worth*	2020 Net Worth*	2019 Net Worth*		SAIFI	SAIDI	
				GENCO	NGCP	NEA	BANKS								
<b>CAR - Cordillera Administrative Region</b>															
ABRECO	49,570	51,327	90.36	Res.Arrears	Current	Current	Arrears	19,733	-3,124	27,574	-44,578	14.37%	3.91	1,132.02	100.00
<b>Region V - Bicol Region</b>															
ALECO	389,848	356,225	84	Res.Arrears	Arrears	Arrears	N/A	-311,026	-1,578,201	-1,254,533	-1,004,703	0	53.53	1,687.31	100
MASELCO	64,094	67,316	95	Arrears	N/A	Current	Current	21,450	331,437	262,140	322,010	0	15.86	2,119.66	65
<b>ARMM - Autonomous Region in Muslim Mindanao</b>															
TAWELCO	46,242	22,939	31	Arrears	N/A	Current	dns	-110,167	-1,301,023	-1,189,383	dns	dns	dns	dns	22
SULECO	132,492	26,748	38	Arrears	N/A	Current	N/A	15,600	-760,812	-772,333	-849,903	0	19.39	537	28
BASELCO	55,144	34,721	60	Arrears	N/A	Current	N/A	-62,912	-1,545,908	-1,811,543	-1,444,361	0	338	26,585	52
LASURECO	2,915	61,578	23	Arrears	Arrears	Arrears	dns	-618,168	-1,908,447	-1,282,258	dns	dns	dns	dns	60
Note: * - In Thousand Pesos															

## Appendix B: System Reliability Indices

Electric cooperatives	SAIFI	STATUS	SAIDI	STATUS
<b>Region I</b>				
INEC	7.02	C	558.51	C
ISECO	8.19	C	525.18	C
LUELCO	2.25	C	236.46	C
PANELCO I	28.71	NC	1919.21	C
CENPELCO	8.36	C	398.25	C
PANELCO III	1.07	C	11.48	C
<b>Region II</b>				
BATANELCO	7.67	C	677.20	C
CAGELCO I	3.11	C	106.35	C
CAGELCO II	7.50	C	473.50	C
ISELCO I	6.75	C	311.53	C
ISELCO II	19.38	C	704.97	C
NUVELCO	8.88	C	606.59	C
QUIRELCO	5.07	C	224.42	C
<b>CAR</b>				
ABRECO	3.91	C	1132.02	C
BENECO	9.00	C	1205.49	C
IFELCO	22.48	C	1291.96	C
KAELCO	0.53	C	43.04	C
MOPRECO	6.39	C	834.50	C
<b>Region III</b>				
AURELCO	2.55	C	239.94	C
TARELCO I	13.19	C	732.18	C
TARELCO II	9.39	C	327.93	C
NEECO I	9.15	C	231.14	C
NEECO II - AREA 1	9.75	C	803.92	C
NEECO II - AREA 2	8.27	C	434.47	C
SAJELCO	1.38	C	29.37	C
PRESCO	2.82	C	221.90	C
PELCO I	4.30	C	274.36	C
PELCO II	9.29	C	561.00	C
PELCO III	2.14	C	97.95	C
PENELCO	1.88	C	139.90	C
ZAMECO I	15.17	C	666.94	C
ZAMECO II	11.14	C	364.72	C

Note: C – Compliant, NC – Non-Compliant, dns – Did not Submit

## Appendix B: System Reliability Indices

Electric cooperatives	SAIFI	STATUS	SAIDI	STATUS
<b>Region IV-A</b>				
FLECO	5.62	C	185.39	C
BATELEC I	6.32	C	388.09	C
BATELEC II	6.40	C	329.83	C
QUEZELCO I	6.60	C	206.64	C
QUEZELCO II	3.86	C	315.11	C
<b>Region IV-B</b>				
LUBELCO	32.54	NC	2950.22	NC
OMECO	21.83	C	895.23	C
ORMECO	18.33	C	1026.85	C
MARELCO	23.17	C	1813.87	C
TIELCO	9.76	C	551.53	C
ROMELCO	8.56	C	161.29	C
BISELCO	23.23	C	1499.04	C
PALECO	29.46	NC	2516.62	C
<b>Region V</b>				
CANORECO	5.86	C	117.81	C
CASURECO I	10.10	C	708.65	C
CASURECO II	37.60	NC	1144.88	C
CASURECO III	14.01	C	458.07	C
CASURECO IV	9.19	C	434.98	C
ALECO	53.53	NC	1687.31	C
SORECO I	11.84	C	783.88	C
SORECO II	8.72	C	540.40	C
FICELCO	26.24	NC	2645.91	C
MASELCO	15.86	C	2119.66	C
TISELCO	15.27	C	161.61	C
<b>Region VI</b>				
AKELCO	18.20	C	774.35	C
ANTECO	7.49	C	484.94	C
CAPELCO	5.08	C	536.84	C
ILECO I	7.34	C	80.33	C
ILECO II	22.85	C	1033.79	C
ILECO III	9.40	C	160.93	C
GUIMELCO	2.40	C	207.72	C
NONECO	4.25	C	428.87	C
CENECO	10.04	C	374.43	C
NOCECO	8.03	C	617.53	C

Note: C – Compliant, NC – Non-Compliant, dns – Did not Submit

## Appendix B: System Reliability Indices

Electric cooperatives	SAIFI	STATUS	SAIDI	STATUS
<b>Region VII</b>				
NORECO I	21.64	C	1274.82	C
NORECO II	15.82	C	589.11	C
BANELCO	19.94	C	936.26	C
CEBECO I	10.46	C	741.52	C
CEBECO II	6.21	C	1428.62	C
CEBECO III	6.08	C	334.43	C
PROSIELCO	26.17	NC	1892.85	C
CELCO	25.72	NC	718.61	C
BOHECO I	9.94	C	865.05	C
BOHECO II	5.01	C	816.67	C
<b>Region VIII</b>				
DORELCO	0.99	C	57.76	C
LEYECO II	3.85	C	291.33	C
LEYECO III	2.73	C	48.43	C
LEYECO IV	10.18	C	596.40	C
LEYECO V	4.07	C	259.57	C
SOLECO	14.40	C	1109.73	C
BILECO	20.63	C	1335.54	C
NORSAMELCO	6.44	C	312.31	C
SAMELCO I	3.71	C	75.66	C
SAMELCO II	10.41	C	492.59	C
ESAMELCO	13.04	C	1696.30	C
<b>Region IX</b>				
ZANECO	18.90	C	1036.22	C
ZAMSURECO I	9.73	C	918.60	C
ZAMSURECO II	9.64	C	863.68	C
ZAMCELCO	2.93	C	101.87	C

Note: C – Compliant, NC – Non-Compliant, dns – Did not Submit

## Appendix B: System Reliability Indices

Electric cooperatives	SAIFI	STATUS	SAIDI	STATUS
<b>Region X</b>				
MOELCI I	18.15	C	1698.85	C
MOELCI II	13.08	C	703.49	C
MORESCO I	7.94	C	522.95	C
MORESCO II	21.76	C	2346.32	C
FIBECO	3.22	C	159.33	C
BUSECO	7.32	C	499.90	C
CAMELCO	20.04	C	643.97	C
LANECO	9.88	C	328.11	C
<b>Region XI</b>				
DORECO	17.05	C	454.95	C
DANECO	14.59	C	20074.47	NC
DASURECO	20.09	C	1055.87	C
<b>Region XII</b>				
COTELCO	12.49	C	208.33	C
COTELCO-PPALMA	0.71	C	4.67	C
SOCOTECO I	14.52	C	734.31	C
SOCOTECO II	11.64	C	498.41	C
SUKELCO	9.85	C	221.77	C
<b>ARMM</b>				
TAWELCO	dns	NC	dns	NC
SIASELCO	dns	NC	dns	NC
SULECO	19.39	C	537.49	C
BASELCO	337.95	NC	26584.97	NC
CASELCO	dns	NC	dns	NC
LASURECO	dns	NC	dns	NC
MAGELCO	22.52	C	2118.88	C
<b>Region XIII</b>				
ANECO	8.55	C	455.16	C
ASELCO	14.13	C	545.19	C
SURNECO	11.55	C	904.70	C
SIARELCO	4.04	C	454.33	C
DIELCO	2.47	C	57.92	C
SURSECO I	6.40	C	942.16	C
SURSECO II	16.22	C	749.06	C

Note: C – Compliant, NC – Non-Compliant, dns – Did not Submit

### Appendix C: Table on Institutional Compliance Rating

Electric cooperatives	Institutional Rating	Color Classification
<b>Region I</b>		
INEC	88.00	Yellow-1
ISECO	89.00	Green
LUELCO	100.00	Green
PANELCO I	71.00	Yellow-1
CENPELCO	77.00	Yellow-1
PANELCO III	95.00	Green
<b>Region II</b>		
BATANELCO	37.00	Yellow-1
CAGELCO I	96.67	Yellow-1
CAGELCO II	90.00	Green
ISELCO I	94.00	Yellow-1
ISELCO II	61.00	Yellow-1
NUVELCO	48.67	Yellow-1
QUIRELCO	82.00	Green
<b>CAR</b>		
ABRECO	57.33	Red
BENECO	60.33	Yellow-2
IFELCO	81.00	Yellow-1
KAELCO	56.67	Yellow-1
MOPRECO	95.67	Green
<b>Region III</b>		
AURELCO	99.00	Green
TARELCO I	95.00	Yellow-1
TARELCO II	100.00	Green
NEECO I	100.00	Green
NEECO II - AREA 1	100.00	Green
NEECO II - AREA 2	100.00	Green
SAJELCO	76.00	Yellow-1
PRESCO	86.67	Green
PELCO I	100.00	Green
PELCO II	87.67	Green
PELCO III	90.00	Yellow-1
PENELCO	79.33	Green
ZAMECO I	100.00	Yellow-1
ZAMECO II	90.00	Yellow-1

**Appendix C: Table on Institutional Compliance Rating**

<b>Electric cooperatives</b>	<b>Institutional Rating</b>	<b>Color Classification</b>
<b>Region IV-A</b>		
FLECO	100.00	Green
BATELEC I	100.00	Yellow-1
BATELEC II	98.67	Green
QUEZELCO I	93.33	Yellow-1
QUEZELCO II	100.00	Green
<b>Region IV-B</b>		
LUBELCO	86.00	Yellow-1
OMECO	90.00	Green
ORMECO	97.00	Yellow-1
MARELCO	100.00	Yellow-1
TIELCO	90.00	Green
ROMELCO	97.00	Green
BISELCO	89.67	Yellow-1
PALECO	83.67	Yellow-1
<b>Region V</b>		
CANORECO	86.00	Green
CASURECO I	88.67	Green
CASURECO II	97.00	Yellow-1
CASURECO III	100.00	Yellow-1
CASURECO IV	100.00	Green
ALECO	58.00	Red
SORECO I	85.00	Yellow-1
SORECO II	97.00	Yellow-1
FICELCO	98.67	Green
MASELCO	93.00	Red
TISELCO	44.33	Yellow-1
<b>Region VI</b>		
AKELCO	100.00	Yellow-1
ANTECO	96.00	Yellow-1
CAPELCO	100.00	Green
ILECO I	95.00	Green
ILECO II	94.00	Yellow-1
ILECO III	100.00	Green
GUIMELCO	100.00	Green
NONECO	100.00	Yellow-1
CENECO	100.00	Yellow-1
NOCECO	98.00	Green



### Appendix C: Table on Institutional Compliance Rating

Electric cooperatives	Institutional Rating	Color Classification
<b>Region VII</b>		
NORECO I	88.67	Yellow-1
NORECO II	76.00	Yellow-1
BANELCO	94.00	Green
CEBECO I	94.00	Green
CEBECO II	100.00	Green
CEBECO III	90.00	Green
PROSIELCO	98.67	Green
CELCO	87.00	Green
BOHECO I	99.00	Yellow-1
BOHECO II	84.33	Green
<b>Region VIII</b>		
DORELCO	70.67	Green
LEYECO II	96.67	Green
LEYECO III	100.00	Green
LEYECO IV	93.33	Green
LEYECO V	90.00	Yellow-1
SOLECO	56.67	Green
BILECO	100.00	Green
NORSAMELCO	95.00	Yellow-1
SAMELCO I	91.00	Green
SAMELCO II	94.00	Green
ESAMELCO	85.67	Green
<b>Region IX</b>		
ZANECO	84.00	Yellow-1
ZAMSURECO I	100.00	Green
ZAMSURECO II	94.00	Yellow-2
ZAMCELCO	79.67	Yellow-2
<b>Region X</b>		
MOELCI I	75.00	Yellow-1
MOELCI II	80.00	Yellow-1
MORESCO I	86.67	Green
MORESCO II	97.00	Green
FIBECO	77.67	Yellow-2
BUSECO	100.00	Green
CAMELCO	97.00	Yellow-1
LANECO	90.00	Yellow-1

**Appendix C: Table on Institutional Compliance Rating**

<b>Electric cooperatives</b>	<b>Institutional Rating</b>	<b>Color Classification</b>
<b>Region XI</b>		
DORECO	90.00	<b>Yellow-1</b>
DANECO	100.00	<b>Yellow-2</b>
DASURECO	90.00	<b>Yellow-1</b>
<b>Region XII</b>		
COTELCO	100.00	<b>Green</b>
COTELCO-PPALMA	72.00	<b>Green</b>
SOCOTECO I	96.67	<b>Yellow-1</b>
SOCOTECO II	100.00	<b>Yellow-1</b>
SUKELCO	83.67	<b>Yellow-1</b>
<b>ARMM</b>		
TAWELCO	9.00	<b>Red</b>
SIASELCO	15.33	<b>Yellow-2</b>
SULECO	24.00	<b>Red</b>
BASELCO	64.00	<b>Red</b>
CASELCO	11.00	<b>Yellow-2</b>
LASURECO	41.00	<b>Red</b>
MAGELCO	64.00	<b>Yellow-2</b>
<b>Region XIII</b>		
ANECO	99.00	<b>Green</b>
ASELCO	100.00	<b>Yellow-1</b>
SURNECO	100.00	<b>Yellow-1</b>
SIARELCO	90.00	<b>Green</b>
DIELCO	90.00	<b>Green</b>
SURSECO I	100.00	<b>Green</b>
SURSECO II	92.67	<b>Green</b>

## Appendix D: Monthly Institutional Assessment Report

INSTITUTIONAL PERFORMANCE ASSESSMENT REPORT																	
For the Month of October 2021																	
Electric Cooperatives	Good Governance (50%)								Leadership and Management (20%)			Stakeholders (30%)					Total
	Cash Adv. / Power Acct. Payables (10 pts.)	BOD Attendance (10 pts.)	Cont. qual. (10 pts.)	Absence of verified complaint (5 pts.)	Reorganizational Structure (5 pts.)	IT Infrastructure (5 pts.)	Audit Rating (5 pts.)	Sub-total	Employee - Consumer ratio (10 pts.)	Avail. of retirement fund (10 pts.)	Sub-total	Customer Service Standard (14 pts.)	Conduct of AGMA (6 pts.)	District Election (6 pts.)	Actions on consumer complaint (4 pts.)	Sub-total	
<b>REGION I</b>																	
INEC	10	10	10	5	5	5	5	50	10	10	20	14	6	0	4	24	94
ISECO	10	10	0	5	5	4	5	39	10	10	20	14	6	6	4	30	89
LUELCO	10	10	10	5	5	5	5	50	10	10	20	14	6	6	4	30	100
PANELCO I	10	10	10	5	5	5	0	45	10	10	20	14	6	0	4	24	89
CENPELCO	10	10	0	5	5	5	2	37	10	0	10	14	6	6	4	30	77
PANELCO III	10	10	10	5	5	5	0	45	10	10	20	14	6	6	4	30	95
<b>REGION II</b>																	
BATANELCO	0	0	0	5	5	0	5	15	0	0	0	0	6	0	0	6	21
CAGELCO I	10	10	10	5	5	5	5	50	10	10	20	14	6	6	4	30	100
CAGELCO II	10	10	0	5	5	5	5	40	10	10	20	14	6	6	4	30	90
ISELCO I	10	10	10	5	5	5	5	50	10	10	20	14	6	0	4	24	94
ISELCO II	10	10	0	5	0	5	0	30	10	10	20	14	6	0	4	24	74
NUVELCO	10	0	10	5	0	0	5	30	10	0	10	0	6	6	0	12	52
QUIRELCO	10	10	10	5	0	5	0	40	10	10	20	14	6	0	4	24	84
<b>CAR</b>																	
ABRECO	10	10	10	5	5	5	0	45	0	0	0	10	6	6	4	26	71
BENECO	10	10	0	5	5	5	0	35	10	10	20	12	6	6	4	28	83
IFELCO	10	10	10	5	5	5	2	47	10	0	10	14	6	0	4	24	81
KAELCO	0	0	0	5	5	3	5	18	10	0	10	14	6	0	4	24	52
MOPRECO	10	10	10	5	5	4	5	49	10	10	20	14	6	6	4	30	99
<b>REGION III</b>																	
AURELCO	10	10	10	5	5	4	5	49	10	10	20	14	6	6	4	30	99
TARELCO I	10	10	10	5	5	5	0	45	10	10	20	14	6	6	4	30	95
TARELCO II	10	10	10	5	5	5	5	50	10	10	20	14	6	6	4	30	100
NEECO I	10	10	10	5	5	5	5	50	10	10	20	14	6	6	4	30	100
NEECO II-AREA 1	10	10	10	5	5	5	5	50	10	10	20	14	6	6	4	30	100
NEECO II-AREA 2	10	10	10	5	5	5	5	50	10	10	20	14	6	6	4	30	100
SAJELCO	10	10	0	5	5	5	5	40	0	10	10	14	6	0	4	24	74
PRESCO	10	10	0	5	5	5	5	40	10	10	20	14	6	6	4	30	90
PELCO I	10	10	10	5	5	5	5	50	10	10	20	14	6	6	4	30	100
PELCO II	10	10	10	5	0	5	5	45	10	10	20	12	6	0	4	22	87
PELCO III	10	10	10	5	5	5	5	50	10	0	10	14	6	6	4	30	90
PENELCO	0	10	0	5	5	5	5	30	10	10	20	14	6	0	4	24	74
ZAMECO I	10	10	10	5	5	5	5	50	10	10	20	14	6	6	4	30	100
ZAMECO II	10	10	0	5	5	5	5	40	10	10	20	14	6	6	4	30	90

## Appendix D: Monthly Institutional Assessment Report

INSTITUTIONAL PERFORMANCE ASSESSMENT REPORT																	
For the Month of October 2021																	
Electric Cooperatives	Good Governance (50%)								Leadership and Management (20%)			Stakeholders (30%)				Total	
	Cash Adv. / Power Acct. Payables (10 pts.)	BOD Attendance (10 pts.)	Cont. qual. (10 pts.)	Absence of verified complaint (5 pts.)	Reorganizational Structure (5 pts.)	IT Infrastructure (5 pts.)	Audit Rating (5 pts.)	Sub-total	Employee - Consumer ratio (10 pts.)	Avail. of retirement fund (10 pts.)	Sub-total	Customer Service Standard (14 pts.)	Conduct of AGMA (6 pts.)	District Election (6 pts.)	Actions on consumer complaint (4 pts.)		Sub-total
<b>REGION IV-A</b>																	
FLECO	10	10	10	5	5	5	5	50	10	10	20	14	6	6	4	30	100
BATELEC I	10	10	10	5	5	5	5	50	10	10	20	14	6	6	4	30	100
BATELEC II	10	10	10	5	5	5	5	50	10	10	20	14	6	6	0	26	96
QUEZELCO I	10	10	10	5	5	5	5	50	10	10	20	14	6	6	4	30	100
QUEZELCO II	10	10	10	5	5	5	5	50	10	10	20	14	6	6	4	30	100
<b>REGION IV-B</b>																	
LUBELCO	10	10	10	5	5	3	5	48	10	0	10	14	6	6	4	30	88
OMECO	10	10	0	5	5	5	5	40	10	10	20	14	6	6	4	30	90
ORMECO	10	10	10	5	5	5	2	47	10	10	20	14	6	6	4	30	97
MARELCO	10	10	10	5	5	5	5	50	10	10	20	14	6	6	4	30	100
TIELCO	10	10	0	5	5	5	5	40	10	10	20	14	6	6	4	30	90
ROMELCO	10	10	10	5	5	5	2	47	10	10	20	14	6	6	4	30	97
BISELCO	10	0	10	5	5	5	0	35	10	10	20	14	6	6	4	30	85
PALECO	0	10	0	5	5	5	2	27	10	10	20	14	6	6	4	30	77
<b>REGION V</b>																	
CANORECO	10	10	10	5	5	5	5	50	10	0	10	12	6	6	4	28	88
CASURECO I	10	10	0	5	5	5	5	40	10	10	20	14	6	6	4	30	90
CASURECO II	10	10	10	5	5	5	2	47	10	10	20	14	6	6	4	30	97
CASURECO III	10	10	10	5	5	5	5	50	10	10	20	14	6	6	4	30	100
CASURECO IV	10	10	10	5	5	5	5	50	10	10	20	14	6	6	4	30	100
APEC/ALECO	10	10	10	5	5	2	0	42	0	0	0	10	6	6	0	22	64
SORECO I	10	10	0	5	5	5	2	37	10	10	20	14	6	6	4	30	87
SORECO II	10	10	10	5	5	5	2	47	10	10	20	14	6	6	4	30	97
FICELCO	10	10	10	5	5	5	5	50	10	10	20	14	6	6	4	30	100
MASELCO	10	10	10	5	5	5	2	47	10	10	20	12	6	6	4	28	95
TISELCO	0	0	10	5	5	3	2	25	10	0	10	14	6	0	4	24	59
<b>REGION VI</b>																	
AKELCO	10	10	10	5	5	5	5	50	10	10	20	14	6	6	4	30	100
ANTECO	10	10	10	5	5	4	2	46	10	10	20	14	6	6	4	30	96
CAPELCO	10	10	10	5	5	5	5	50	10	10	20	14	6	6	4	30	100
ILECO I	10	10	10	5	5	5	0	45	10	10	20	14	6	6	4	30	95
ILECO II	10	10	10	5	5	5	5	50	10	10	20	14	6	0	4	24	94
ILECO III	10	10	10	5	5	5	5	50	10	10	20	14	6	6	4	30	100
GUIMELCO	10	10	10	5	5	5	5	50	10	10	20	14	6	6	4	30	100
NONECO	10	10	10	5	5	5	5	50	10	10	20	14	6	6	4	30	100
CENECO	10	10	10	5	5	5	5	50	10	10	20	14	6	6	4	30	100
NOCECO	10	10	10	5	5	5	5	50	10	10	20	14	6	6	4	30	100

## Appendix D: Monthly Institutional Assessment Report

INSTITUTIONAL PERFORMANCE ASSESSMENT REPORT																	
For the Month of October 2021																	
Electric Cooperatives	Good Governance (50%)								Leadership and Management (20%)			Stakeholders (30%)					Total
	Cash Adv. / Power Acct. Payables (10 pts.)	BOD Attendance (10 pts.)	Cont. qual. (10 pts.)	Absence of verified complaint (5 pts.)	Reorganizational Structure (5 pts.)	IT Infrastructure (5 pts.)	Audit Rating (5 pts.)	Sub-total	Employee - Consumer ratio (10 pts.)	Avail. of retirement fund (10 pts.)	Sub-total	Customer Service Standard (14 pts.)	Conduct of AGMA (6 pts.)	District Election (6 pts.)	Actions on consumer complaint (4 pts.)	Sub-total	
<b>REGION VII</b>																	
NORECO I	10	10	10	5	5	5	5	50	10	0	10	14	6	6	4	30	90
NORECO II	10	10	0	5	5	1	5	36	10	10	20	4	6	6	4	20	76
BANELCO	10	10	10	5	5	5	5	50	10	10	20	14	6	0	4	24	94
CEBECO I	10	10	10	5	5	5	5	50	10	10	20	14	6	0	4	24	94
CEBECO II	10	10	10	5	5	5	5	50	10	10	20	14	6	6	4	30	100
CEBECO III	10	10	0	5	5	5	5	40	10	10	20	14	6	6	4	30	90
PROSIELCO	10	10	10	5	5	5	5	50	10	10	20	14	6	6	4	30	100
CELCO	10	10	10	5	0	5	5	45	10	10	20	14	6	0	4	24	89
BOHECO I	10	10	10	5	5	4	5	49	10	10	20	14	6	6	4	30	99
BOHECO II	10	10	0	5	5	5	5	40	10	10	20	14	6	6	4	30	90
<b>REGION VIII</b>																	
DORELCO	10	0	0	5	0	5	0	20	10	10	20	14	6	0	4	24	64
LEYECO II	10	10	10	5	5	5	5	50	10	0	10	14	6	6	4	30	90
LEYECO III	10	10	10	5	5	5	5	50	10	10	20	14	6	6	4	30	100
LEYECO IV	10	10	0	5	5	5	5	40	10	10	20	14	6	6	4	30	90
LEYECO V	10	10	0	5	5	5	5	40	10	10	20	14	6	6	4	30	90
SOLECO	10	10	0	5	5	5	5	40	10	0	10	14	6	0	4	24	74
BILECO	10	10	10	5	5	5	5	50	10	10	20	14	6	6	4	30	100
NORSAMELCO	10	10	10	5	5	5	0	45	10	10	20	14	6	6	4	30	95
SAMELCO I	10	10	10	5	5	5	2	47	10	10	20	14	6	0	4	24	91
SAMELCO II	10	10	10	5	5	5	5	50	10	10	20	14	6	0	4	24	94
ESAMELCO	10	10	10	5	5	5	0	45	10	10	20	14	6	0	4	24	89
<b>REGION IX</b>																	
ZANECO	10	10	10	5	5	5	5	50	10	0	10	14	6	0	4	24	84
ZAMSURECO I	10	10	10	5	5	5	5	50	10	10	20	14	6	6	4	30	100
ZAMSURECO II	10	10	10	5	5	4	2	46	10	10	20	14	6	6	4	30	96
ZAMCELCO	10	10	10	5	5	5	2	47	0	0	0	14	6	6	0	26	73
<b>REGION X</b>																	
MOELCI I	0	10	0	5	5	5	0	25	10	10	20	14	6	6	4	30	75
MOELCI II	0	10	0	5	5	5	5	30	10	10	20	14	6	6	4	30	80
MORESCO I	10	10	0	5	5	5	5	40	10	0	10	14	6	6	4	30	80
MORESCO II	10	10	10	5	5	5	2	47	10	10	20	14	6	6	4	30	97
FIBECO	10	10	0	5	5	5	2	37	10	10	20	14	6	0	4	24	81
BUSECO	10	10	10	5	5	5	5	50	10	10	20	14	6	6	4	30	100
CAMELCO	10	10	10	5	5	5	2	47	10	10	20	14	6	6	4	30	97
LANECO	10	10	0	5	5	5	5	40	10	10	20	14	6	6	4	30	90

## Appendix D: Monthly Institutional Assessment Report

INSTITUTIONAL PERFORMANCE ASSESSMENT REPORT																	
For the Month of October 2021																	
Electric Cooperatives	Good Governance (50%)								Leadership and Management (20%)			Stakeholders (30%)					Total
	Cash Adv. / Power Acct. Payables (10 pts.)	BOD Attendance (10 pts.)	Cont. qual. (10 pts.)	Absence of verified complaint (5 pts.)	Reorganizational Structure (5 pts.)	IT Infrastructure (5 pts.)	Audit Rating (5 pts.)	Sub-total	Employee - Consumer ratio (10 pts.)	Avail. of retirement fund (10 pts.)	Sub-total	Customer Service Standard (14 pts.)	Conduct of AGMA (6 pts.)	District Election (6 pts.)	Actions on consumer complaint (4 pts.)	Sub-total	
<b>REGION XI</b>																	
DORECO	10	10	0	5	5	5	5	40	10	10	20	14	6	6	4	30	90
DANECO	10	10	10	5	5	5	5	50	10	10	20	14	6	6	4	30	100
DASURECO	10	10	0	5	5	5	5	40	10	10	20	14	6	6	4	30	90
<b>REGION XII</b>																	
COTELCO	10	10	10	5	5	5	5	50	10	10	20	14	6	6	4	30	100
COTELCO-PPALMA	10	10	0	5	5	5	5	40	10	0	10	14	6	0	4	24	74
SOCOTECO I	10	10	10	5	5	5	5	50	10	10	20	14	6	6	4	30	100
SOCOTECO II	10	10	10	5	5	5	5	50	10	10	20	14	6	6	4	30	100
SUKELCO	10	0	0	5	5	5	2	27	10	10	20	14	6	6	4	30	77
<b>ARMM</b>																	
TAWELCO	0	0	0	5	0	0	0	5	0	0	0	0	6	0	0	6	11
SIASELCO	0	0	0	5	5	0	0	10	0	0	0	0	6	0	0	6	16
SULECO	0	0	0	5	5	0	0	10	10	0	10	0	6	0	0	6	26
BASELCO	0	10	0	5	5	5	0	25	10	10	20	12	6	6	4	28	73
CASELCO	0	0	0	5	0	0	0	5	0	0	0	0	6	0	0	6	11
LASURECO	0	0	0	5	5	0	0	10	10	0	10	0	6	6	0	12	32
MAGELCO	10	10	0	5	5	4	0	34	10	10	20	0	6	0	4	10	64
<b>CARAGA</b>																	
ANECO	10	10	10	5	5	4	5	49	10	10	20	14	6	6	4	30	99
ASELCO	10	10	10	5	5	5	5	50	10	10	20	14	6	6	4	30	100
SURNECO	10	10	10	5	5	5	5	50	10	10	20	14	6	6	4	30	100
SIARELCO	10	10	0	5	5	5	5	40	10	10	20	14	6	6	4	30	90
DIELCO	10	10	10	5	5	5	5	50	10	0	10	14	6	6	4	30	90
SURSECO I	10	10	10	5	5	5	5	50	10	10	20	14	6	6	4	30	100
SURSECO II	10	10	10	5	5	5	5	50	10	10	20	12	6	0	4	22	92

## Appendix D: Monthly Institutional Assessment Report

INSTITUTIONAL PERFORMANCE ASSESSMENT REPORT																	
For the Month of November 2021																	
Electric Cooperatives	Good Governance (50%)								Leadership and Management (20%)			Stakeholders (30%)					Total
	Cash Adv. / Power Acct. Payables (10 pts.)	BOD Attendance (10 pts.)	Cont. qual. (10 pts.)	Absence of verified complaint (5 pts.)	Reorganizational Structure (5 pts.)	IT Infra-structure (5 pts.)	Audit Rating (5 pts.)	Sub-total	Employee - Consumer ratio (10 pts.)	Avail. of retirement fund (10 pts.)	Sub-total	Customer Service Standard (14 pts.)	Conduct of AGMA (6 pts.)	District Election (6 pts.)	Actions on consumer complaint (4 pts.)	Sub-total	
<b>REGION I</b>																	
INEC	10	10	10	5	5	5	5	50	10	10	20	14	6	0	4	24	94
ISECO	10	10	0	5	5	4	5	39	10	10	20	14	6	6	4	30	89
LUELCO	10	10	10	5	5	5	5	50	10	10	20	14	6	6	4	30	100
PANELCO I	10	10	10	5	5	5	0	45	10	10	20	14	6	0	4	24	89
CENPELCO	10	10	0	5	5	5	2	37	10	0	10	14	6	6	4	30	77
PANELCO III	10	10	10	5	5	5	0	45	10	10	20	14	6	6	4	30	95
<b>REGION II</b>																	
BATANELCO	0	0	0	5	5	0	5	15	0	0	0	0	6	0	0	6	21
CAGELCO I	10	10	10	5	5	5	5	50	10	10	20	14	6	6	4	30	100
CAGELCO II	10	10	0	5	5	5	5	40	10	10	20	14	6	6	4	30	90
ISELCO I	10	10	10	5	5	5	5	50	10	10	20	14	6	0	4	24	94
ISELCO II	10	10	0	5	0	5	0	30	10	10	20	14	6	0	4	24	74
NUVELCO	10	0	10	5	0	0	5	30	10	0	10	0	6	6	0	12	52
QUIRELCO	10	10	10	5	0	5	0	40	10	10	20	14	6	0	4	24	84
<b>CAR</b>																	
ABRECO	10	10	10	5	5	0	0	40	0	0	0	0	6	6	4	16	56
BENECO	10	10	0	5	5	0	0	30	10	10	20	0	6	6	4	16	66
IFELCO	10	10	10	5	5	5	2	47	10	0	10	14	6	0	4	24	81
KAELCO	0	10	0	5	5	3	5	28	10	0	10	14	6	0	4	24	62
MOPRECO	10	0	10	5	5	4	5	39	10	10	20	14	6	6	4	30	89
<b>REGION III</b>																	
AURELCO	10	10	10	5	5	4	5	49	10	10	20	14	6	6	4	30	99
TARELCO I	10	10	10	5	5	5	0	45	10	10	20	14	6	6	4	30	95
TARELCO II	10	10	10	5	5	5	5	50	10	10	20	14	6	6	4	30	100
NEECO I	10	10	10	5	5	5	5	50	10	10	20	14	6	6	4	30	100
NEECO II-AREA 1	10	10	10	5	5	5	5	50	10	10	20	14	6	6	4	30	100
NEECO II-AREA 2	10	10	10	5	5	5	5	50	10	10	20	14	6	6	4	30	100
SAJELCO	10	10	0	5	5	5	5	40	0	10	10	14	6	0	4	24	74
PRESCO	10	10	0	5	5	5	5	40	10	0	10	14	6	6	4	30	80
PELCO I	10	10	10	5	5	5	5	50	10	10	20	14	6	6	4	30	100
PELCO II	10	10	10	5	0	5	5	45	10	10	20	14	6	0	4	24	89
PELCO III	10	10	10	5	5	5	5	50	10	0	10	14	6	6	4	30	90
PENELCO	10	10	0	5	5	5	5	40	10	0	10	14	6	6	4	30	80
ZAMECO I	10	10	10	5	5	5	5	50	10	10	20	14	6	6	4	30	100
ZAMECO II	10	10	0	5	5	5	5	40	10	10	20	14	6	6	4	30	90

## Appendix D: Monthly Institutional Assessment Report

INSTITUTIONAL PERFORMANCE ASSESSMENT REPORT																	
For the Month of November 2021																	
Electric Cooperatives	Good Governance (50%)								Leadership and Management (20%)			Stakeholders (30%)				Total	
	Cash Adv. / Power Acct. Payables (10 pts.)	BOD Attendance (10 pts.)	Cont. qual. (10 pts.)	Absence of verified complaint (5 pts.)	Reorganizational Structure (5 pts.)	IT Infrastructure (5 pts.)	Audit Rating (5 pts.)	Sub-total	Employee - Consumer ratio (10 pts.)	Avail. of retirement fund (10 pts.)	Sub-total	Customer Service Standard (14 pts.)	Conduct of AGMA (6 pts.)	District Election (6 pts.)	Actions on consumer complaint (4 pts.)		Sub-total
<b>REGION IV-A</b>																	
FLECO	10	10	10	5	5	5	5	50	10	10	20	14	6	6	4	30	100
BATELEC I	10	10	10	5	5	5	5	50	10	10	20	14	6	6	4	30	100
BATELEC II	10	10	10	5	5	5	5	50	10	10	20	14	6	6	4	30	100
QUEZELCO I	10	10	0	5	5	5	5	40	10	10	20	14	6	6	4	30	90
QUEZELCO II	10	10	10	5	5	5	5	50	10	10	20	14	6	6	4	30	100
<b>REGION IV-B</b>																	
LUBELCO	10	10	10	5	5	3	5	48	10	0	10	14	6	6	4	30	88
OMECO	10	10	0	5	5	5	5	40	10	10	20	14	6	6	4	30	90
ORMECO	10	10	10	5	5	5	2	47	10	10	20	14	6	6	4	30	97
MARELCO	10	10	10	5	5	5	5	50	10	10	20	14	6	6	4	30	100
TIELCO	10	10	0	5	5	5	5	40	10	10	20	14	6	6	4	30	90
ROMELCO	10	10	10	5	5	5	2	47	10	10	20	14	6	6	4	30	97
BISELCO	10	10	10	5	5	5	0	45	10	10	20	14	6	6	4	30	95
PALECO	0	10	0	5	5	5	2	27	10	10	20	14	6	6	4	30	77
<b>REGION V</b>																	
CANORECO	10	10	10	5	5	5	5	50	10	0	10	12	6	6	4	28	88
CASURECO I	10	10	0	5	5	5	5	40	10	10	20	14	6	6	4	30	90
CASURECO II	10	10	10	5	5	5	2	47	10	10	20	14	6	6	4	30	97
CASURECO III	10	10	10	5	5	5	5	50	10	10	20	14	6	6	4	30	100
CASURECO IV	10	10	10	5	5	5	5	50	10	10	20	14	6	6	4	30	100
APEC/ALECO	10	0	10	5	5	2	0	32	0	0	0	12	6	6	0	24	56
SORECO I	10	10	0	5	5	5	2	37	10	10	20	14	6	6	4	30	87
SORECO II	10	10	10	5	5	5	2	47	10	10	20	14	6	6	4	30	97
FICELCO	10	10	10	5	5	5	5	50	10	10	20	14	6	6	0	26	96
MASELCO	10	10	10	5	5	5	2	47	10	10	20	12	6	6	4	28	95
TISELCO	0	0	0	5	5	0	2	12	10	0	10	0	6	0	4	10	32
<b>REGION VI</b>																	
AKELCO	10	10	10	5	5	5	5	50	10	10	20	14	6	6	4	30	100
ANTECO	10	10	10	5	5	4	2	46	10	10	20	14	6	6	4	30	96
CAPELCO	10	10	10	5	5	5	5	50	10	10	20	14	6	6	4	30	100
ILECO I	10	10	10	5	5	5	0	45	10	10	20	14	6	6	4	30	95
ILECO II	10	10	10	5	5	5	5	50	10	10	20	14	6	0	4	24	94
ILECO III	10	10	10	5	5	5	5	50	10	10	20	14	6	6	4	30	100
GUIMELCO	10	10	10	5	5	5	5	50	10	10	20	14	6	6	4	30	100
NONECO	10	10	10	5	5	5	5	50	10	10	20	14	6	6	4	30	100
CENECO	10	10	10	5	5	5	5	50	10	10	20	14	6	6	4	30	100
NOCECO	10	10	10	5	5	5	5	50	10	10	20	14	6	6	4	30	100



## Appendix D: Monthly Institutional Assessment Report

For the Month of November 2021																	
Electric Cooperatives	Good Governance (50%)								Leadership and Management (20%)			Stakeholders (30%)					Total
	Cash Adv. / Power Acct. Payables (10 pts.)	BOD Attendance (10 pts.)	Cont. qual. (10 pts.)	Absence of verified complaint (5 pts.)	Reorganizational Structure (5 pts.)	IT Infrastructure (5 pts.)	Audit Rating (5 pts.)	Sub-total	Employee - Consumer ratio (10 pts.)	Avail. of retirement fund (10 pts.)	Sub-total	Customer Service Standard (14 pts.)	Conduct of AGMA (6 pts.)	District Election (6 pts.)	Actions on consumer complaint (4 pts.)	Sub-total	
<b>REGION VII</b>																	
NORECO I	10	10	10	5	5	5	5	50	10	0	10	14	6	6	4	30	90
NORECO II	10	10	0	5	5	1	5	36	10	10	20	4	6	6	4	20	76
BANELCO	10	10	10	5	5	5	5	50	10	10	20	14	6	0	4	24	94
CEBECO I	10	10	10	5	5	5	5	50	10	10	20	14	6	0	4	24	94
CEBECO II	10	10	10	5	5	5	5	50	10	10	20	14	6	6	4	30	100
CEBECO III	10	10	0	5	5	5	5	40	10	10	20	14	6	6	4	30	90
PROSIELCO	10	10	10	5	5	5	5	50	10	10	20	14	6	6	4	30	100
CELCO	10	10	10	5	0	5	5	45	10	10	20	14	6	0	4	24	89
BOHECO I	10	10	10	5	5	4	5	49	10	10	20	14	6	6	4	30	99
BOHECO II	10	10	0	5	5	5	5	40	10	10	20	14	6	0	4	24	84
<b>REGION VIII</b>																	
DORELCO	10	0	10	5	0	5	0	30	10	10	20	14	6	0	4	24	74
LEYECO II	10	10	10	5	5	5	5	50	10	10	20	14	6	6	4	30	100
LEYECO III	10	10	10	5	5	5	5	50	10	10	20	14	6	6	4	30	100
LEYECO IV	10	10	0	5	5	5	5	40	10	10	20	14	6	6	4	30	90
LEYECO V	10	10	0	5	5	5	5	40	10	10	20	14	6	6	4	30	90
SOLECO	10	10	0	5	5	0	5	35	10	10	20	0	6	0	4	10	65
BILECO	10	10	10	5	5	5	5	50	10	10	20	14	6	6	4	30	100
NORSAMELCO	10	10	10	5	5	5	0	45	10	10	20	14	6	6	4	30	95
SAMELCO I	10	10	10	5	5	5	2	47	10	10	20	14	6	0	4	24	91
SAMELCO II	10	10	10	5	5	5	5	50	10	10	20	14	6	0	4	24	94
ESAMELCO	10	0	10	5	5	5	0	35	10	10	20	14	6	0	4	24	79
<b>REGION IX</b>																	
ZANECO	10	10	10	5	5	5	5	50	10	0	10	14	6	0	4	24	84
ZAMSURECO I	10	10	10	5	5	5	5	50	10	10	20	14	6	6	4	30	100
ZAMSURECO II	10	10	10	5	5	4	2	46	10	10	20	14	6	6	4	30	96
ZAMCELCO	10	10	10	5	5	5	2	47	0	10	10	14	6	6	0	26	83
<b>REGION X</b>																	
MOELCI I	0	10	0	5	5	5	0	25	10	10	20	14	6	6	4	30	75
MOELCI II	0	10	0	5	5	5	5	30	10	10	20	14	6	6	4	30	80
MORESCO I	10	10	0	5	5	5	5	40	10	10	20	14	6	6	4	30	90
MORESCO II	10	10	10	5	5	5	2	47	10	10	20	14	6	6	4	30	97
FIBECO	10	10	0	5	5	5	2	37	10	10	20	14	6	0	4	24	81
BUSECO	10	10	10	5	5	5	5	50	10	10	20	14	6	6	4	30	100
CAMELCO	10	10	10	5	5	5	2	47	10	10	20	14	6	6	4	30	97
LANECO	10	10	0	5	5	5	5	40	10	10	20	14	6	6	4	30	90

## Appendix D: Monthly Institutional Assessment Report

INSTITUTIONAL PERFORMANCE ASSESSMENT REPORT																	
For the Month of November 2021																	
Electric Cooperatives	Good Governance (50%)								Leadership and Management (20%)			Stakeholders (30%)					Total
	Cash Adv. / Power Acct. Payables (10 pts.)	BOD Attendance (10 pts.)	Cont. qual. (10 pts.)	Absence of verified complaint (5 pts.)	Reor-ganizational Structure (5 pts.)	IT Infra-structure (5 pts.)	Audit Rating (5 pts.)	Sub-total	Employee - Consumer ratio (10 pts.)	Avail. of retirement fund (10 pts.)	Sub-total	Customer Service Standard (14 pts.)	Conduct of AGMA (6 pts.)	District Election (6 pts.)	Actions on consumer complaint (4 pts.)	Sub-total	
<b>REGION XI</b>																	
DORECO	10	10	0	5	5	5	5	40	10	10	20	14	6	6	4	30	90
DANECO	10	10	10	5	5	5	5	50	10	10	20	14	6	6	4	30	100
DASURECO	10	10	0	5	5	5	5	40	10	10	20	14	6	6	4	30	90
<b>REGION XII</b>																	
COTELCO	10	10	10	5	5	5	5	50	10	10	20	14	6	6	4	30	100
COTELCO-PPALMA	10	10	0	5	5	5	5	40	10	0	10	14	6	0	4	24	74
SOCOTECO I	10	10	10	5	5	5	5	50	10	10	20	14	6	6	4	30	100
SOCOTECO II	10	10	10	5	5	5	5	50	10	10	20	14	6	6	4	30	100
SUKELCO	10	10	0	5	5	5	2	37	10	10	20	14	6	6	4	30	87
<b>ARMM</b>																	
TAWELCO	0	0	0	5	0	0	0	5	0	0	0	0	6	0	0	6	11
SIASELCO	0	0	0	5	5	0	0	10	0	0	0	0	6	0	0	6	16
SULECO	0	0	0	5	5	0	0	10	10	0	10	0	6	0	0	6	26
BASELCO	0	10	0	5	5	5	0	25	10	10	20	12	6	6	4	28	73
CASELCO	0	0	0	5	0	0	0	5	0	0	0	0	6	0	0	6	11
LASURECO	0	10	0	5	5	5	0	25	10	0	10	14	6	6	4	30	65
MAGELCO	10	10	0	5	5	4	0	34	10	10	20	0	6	0	4	10	64
<b>CARAGA</b>																	
ANECO	10	10	10	5	5	4	5	49	10	10	20	14	6	6	4	30	99
ASELCO	10	10	10	5	5	5	5	50	10	10	20	14	6	6	4	30	100
SURNECO	10	10	10	5	5	5	5	50	10	10	20	14	6	6	4	30	100
SIARELCO	10	10	0	5	5	5	5	40	10	10	20	14	6	6	4	30	90
DIELCO	10	10	10	5	5	5	5	50	10	0	10	14	6	6	4	30	90
SURSECO I	10	10	10	5	5	5	5	50	10	10	20	14	6	6	4	30	100
SURSECO II	10	10	10	5	5	5	5	50	10	10	20	12	6	0	4	22	92

## Appendix D: Monthly Institutional Assessment Report

INSTITUTIONAL PERFORMANCE ASSESSMENT REPORT																	
For the Month of December 2021																	
Electric Cooperatives	Good Governance (50%)								Leadership and Management (20%)			Stakeholders (30%)				Total	
	Cash Adv. / Power Acct. Payables (10 pts.)	BOD Attendance (10 pts.)	Cont. qual. (10 pts.)	Absence of verified complaint (5 pts.)	Reorganizational Structure (5 pts.)	IT Infrastructure (5 pts.)	Audit Rating (5 pts.)	Sub-total	Employee - Consumer ratio (10 pts.)	Avail. of retirement fund (10 pts.)	Sub-total	Customer Service Standard (14 pts.)	Conduct of AGMA (6 pts.)	District Election (6 pts.)	Actions on consumer complaint (4 pts.)		Sub-total
<b>REGION I</b>																	
INEC	10	10	10	5	5	5	5	50	10	10	20	14	6	0	4	24	94
ISECO	10	10	0	5	5	4	5	39	10	10	20	14	6	6	4	30	89
LUELCO	10	10	10	5	5	5	5	50	10	10	20	14	6	6	4	30	100
PANELCO I	10	10	10	5	5	5	0	45	10	10	20	14	0	0	4	18	83
CENPELCO	10	10	0	5	5	5	2	37	10	0	10	14	6	6	4	30	77
PANELCO III	10	10	10	5	5	5	0	45	10	10	20	14	6	6	4	30	95
<b>REGION II</b>																	
BATANELCO	0	0	0	5	5	0	5	15	0	0	0	0	6	0	0	6	21
CAGELCO I	10	0	10	5	5	5	5	40	10	10	20	14	6	6	4	30	90
CAGELCO II	10	10	0	5	5	5	5	40	10	10	20	14	6	6	4	30	90
ISELCO I	10	10	10	5	5	5	5	50	10	10	20	14	6	0	4	24	94
ISELCO II	0	0	0	5	0	0	0	5	10	10	20	0	6	0	4	10	35
NUVELCO	0	0	10	5	0	0	5	20	10	0	10	0	6	6	0	12	42
QUIRELCO	10	10	10	5	0	5	0	40	10	10	20	14	0	0	4	18	78
<b>CAR</b>																	
ABRECO	0	0	10	5	5	5	0	25	0	0	0	10	0	6	4	20	45
BENECO	0	0	0	5	5	0	0	10	10	0	10	0	6	6	0	12	32
IFELCO	10	10	10	5	5	5	2	47	10	0	10	14	6	0	4	24	81
KAELCO	0	10	0	5	5	3	5	28	10	0	10	14	0	0	4	18	56
MOPRECO	10	10	10	5	5	4	5	49	10	10	20	14	6	6	4	30	99
<b>REGION III</b>																	
AURELCO	10	10	10	5	5	4	5	49	10	10	20	14	6	6	4	30	99
TARELCO I	10	10	10	5	5	5	0	45	10	10	20	14	6	6	4	30	95
TARELCO II	10	10	10	5	5	5	5	50	10	10	20	14	6	6	4	30	100
NEECO I	10	10	10	5	5	5	5	50	10	10	20	14	6	6	4	30	100
NEECO II-AREA 1	10	10	10	5	5	5	5	50	10	10	20	14	6	6	4	30	100
NEECO II-AREA 2	10	10	10	5	5	5	5	50	10	10	20	14	6	6	4	30	100
SAJELCO	10	10	0	5	5	5	5	40	0	10	10	14	6	6	4	30	80
PRESCO	10	10	0	5	5	5	5	40	10	10	20	14	6	6	4	30	90
PELCO I	10	10	10	5	5	5	5	50	10	10	20	14	6	6	4	30	100
PELCO II	10	10	10	5	0	5	5	45	10	10	20	12	6	0	4	22	87
PELCO III	10	10	10	5	5	5	5	50	10	0	10	14	6	6	4	30	90
PENELCO	10	10	0	5	5	5	5	40	10	10	20	14	6	0	4	24	84
ZAMECO I	10	10	10	5	5	5	5	50	10	10	20	14	6	6	4	30	100
ZAMECO II	10	10	0	5	5	5	5	40	10	10	20	14	6	6	4	30	90

## Appendix D: Monthly Institutional Assessment Report

INSTITUTIONAL PERFORMANCE ASSESSMENT REPORT																	
For the Month of December 2021																	
Electric Cooperatives	Good Governance (50%)								Leadership and Management (20%)			Stakeholders (30%)					Total
	Cash Adv. / Power Acct. Payables (10 pts.)	BOD Attendance (10 pts.)	Cont. qual. (10 pts.)	Absence of verified complaint (5 pts.)	Reorganizational Structure (5 pts.)	IT Infrastructure (5 pts.)	Audit Rating (5 pts.)	Sub-total	Employee - Consumer ratio (10 pts.)	Avail. of retirement fund (10 pts.)	Sub-total	Customer Service Standard (14 pts.)	Conduct of AGMA (6 pts.)	District Election (6 pts.)	Actions on consumer complaint (4 pts.)	Sub-total	
<b>REGION IV-A</b>																	
FLECO	10	10	10	5	5	5	5	50	10	10	20	14	6	6	4	30	100
BATELEC I	10	10	10	5	5	5	5	50	10	10	20	14	6	6	4	30	100
BATELEC II	10	10	10	5	5	5	5	50	10	10	20	14	6	6	4	30	100
QUEZELCO I	10	10	0	5	5	5	5	40	10	10	20	14	6	6	4	30	90
QUEZELCO II	10	10	10	5	5	5	5	50	10	10	20	14	6	6	4	30	100
<b>REGION IV-B</b>																	
LUBELCO	10	10	10	5	5	3	5	48	10	0	10	14	0	6	4	24	82
OMECO	10	10	0	5	5	5	5	40	10	10	20	14	6	6	4	30	90
ORMECO	10	10	10	5	5	5	2	47	10	10	20	14	6	6	4	30	97
MARELCO	10	10	10	5	5	5	5	50	10	10	20	14	6	6	4	30	100
TIELCO	10	10	0	5	5	5	5	40	10	10	20	14	6	6	4	30	90
ROMELCO	10	10	10	5	5	5	2	47	10	10	20	14	6	6	4	30	97
BISELCO	10	10	10	5	5	5	0	45	10	10	20	14	0	6	4	24	89
PALECO	10	10	10	5	5	5	2	47	10	10	20	14	6	6	4	30	97
<b>REGION V</b>																	
CANORECO	10	10	10	5	5	5	5	50	10	0	10	12	0	6	4	22	82
CASURECO I	10	10	0	5	5	5	5	40	10	10	20	14	6	6	4	30	90
CASURECO II	10	10	10	5	5	5	2	47	10	10	20	14	6	6	4	30	97
CASURECO III	10	10	10	5	5	5	5	50	10	10	20	14	6	6	4	30	100
CASURECO IV	10	10	10	5	5	5	5	50	10	10	20	14	6	6	4	30	100
APEC/ALECO	10	10	10	5	5	2	0	42	0	0	0	0	6	6	0	12	54
SORECO I	10	10	0	5	5	5	2	37	10	10	20	14	0	6	4	24	81
SORECO II	10	10	10	5	5	5	2	47	10	10	20	14	6	6	4	30	97
FICELCO	10	10	10	5	5	5	5	50	10	10	20	14	6	6	4	30	100
MASELCO	10	10	10	5	5	5	2	47	10	10	20	12	0	6	4	22	89
TISELCO	0	0	10	5	5	0	2	22	10	0	10	0	6	0	4	10	42
<b>REGION VI</b>																	
AKELCO	10	10	10	5	5	5	5	50	10	10	20	14	6	6	4	30	100
ANTECO	10	10	10	5	5	4	2	46	10	10	20	14	6	6	4	30	96
CAPELCO	10	10	10	5	5	5	5	50	10	10	20	14	6	6	4	30	100
ILECO I	10	10	10	5	5	5	0	45	10	10	20	14	6	6	4	30	95
ILECO II	10	10	10	5	5	5	5	50	10	10	20	14	6	0	4	24	94
ILECO III	10	10	10	5	5	5	5	50	10	10	20	14	6	6	4	30	100
GUIMELCO	10	10	10	5	5	5	5	50	10	10	20	14	6	6	4	30	100
NONECO	10	10	10	5	5	5	5	50	10	10	20	14	6	6	4	30	100
CENECO	10	10	10	5	5	5	5	50	10	10	20	14	6	6	4	30	100
NOCECO	10	10	10	5	5	5	5	50	10	10	20	14	0	6	4	24	94

## Appendix D: Monthly Institutional Assessment Report

INSTITUTIONAL PERFORMANCE ASSESSMENT REPORT																	
For the Month of December 2021																	
Electric Cooperatives	Good Governance (50%)								Leadership and Management (20%)			Stakeholders (30%)					Total
	Cash Adv. / Power Acct. Payables (10 pts.)	BOD Attendance (10 pts.)	Cont. qual. (10 pts.)	Absence of verified complaint (5 pts.)	Reorganizational Structure (5 pts.)	IT Infrastructure (5 pts.)	Audit Rating (5 pts.)	Sub-total	Employee - Consumer ratio (10 pts.)	Avail. of retirement fund (10 pts.)	Sub-total	Customer Service Standard (14 pts.)	Conduct of AGMA (6 pts.)	District Election (6 pts.)	Actions on consumer complaint (4 pts.)	Sub-total	
<b>REGION VII</b>																	
NORECO I	10	10	10	5	5	5	5	50	10	0	10	14	6	6	0	26	86
NORECO II	10	10	0	5	5	1	5	36	10	10	20	4	6	6	4	20	76
BANELCO	10	10	10	5	5	5	5	50	10	10	20	14	6	0	4	24	94
CEBECO I	10	10	10	5	5	5	5	50	10	10	20	14	6	0	4	24	94
CEBECO II	10	10	10	5	5	5	5	50	10	10	20	14	6	6	4	30	100
CEBECO III	10	10	0	5	5	5	5	40	10	10	20	14	6	6	4	30	90
PROSIELCO	10	10	10	5	5	5	5	50	10	10	20	14	6	6	0	26	96
CELCO	10	10	10	5	0	5	5	45	10	10	20	14	0	0	4	18	83
BOHECO I	10	10	10	5	5	4	5	49	10	10	20	14	6	6	4	30	99
BOHECO II	10	10	0	5	5	0	5	35	10	10	20	14	6	0	4	24	79
<b>REGION VIII</b>																	
DORELCO	10	0	10	5	0	5	0	30	10	10	20	14	6	0	4	24	74
LEYECO II	10	10	10	5	5	5	5	50	10	10	20	14	6	6	4	30	100
LEYECO III	10	10	10	5	5	5	5	50	10	10	20	14	6	6	4	30	100
LEYECO IV	10	10	10	5	5	5	5	50	10	10	20	14	6	6	4	30	100
LEYECO V	10	10	0	5	5	5	5	40	10	10	20	14	6	6	4	30	90
SOLECO	0	0	0	5	5	0	5	15	10	0	10	0	6	0	0	6	31
BILECO	10	10	10	5	5	5	5	50	10	10	20	14	6	6	4	30	100
NORSAMELCO	10	10	10	5	5	5	0	45	10	10	20	14	6	6	4	30	95
SAMELCO I	10	10	10	5	5	5	2	47	10	10	20	14	6	0	4	24	91
SAMELCO II	10	10	10	5	5	5	5	50	10	10	20	14	6	0	4	24	94
ESAMELCO	10	10	10	5	5	5	0	45	10	10	20	14	6	0	4	24	89
<b>REGION IX</b>																	
ZANECO	10	10	10	5	5	5	5	50	10	0	10	14	6	0	4	24	84
ZAMSURECO I	10	10	10	5	5	5	5	50	10	10	20	14	6	6	4	30	100
ZAMSURECO II	10	10	10	5	5	4	2	46	10	10	20	14	0	6	4	24	90
ZAMCELCO	10	10	10	5	5	5	2	47	0	10	10	14	6	6	0	26	83
<b>REGION X</b>																	
MOELCI I	0	10	0	5	5	5	0	25	10	10	20	14	6	6	4	30	75
MOELCI II	0	10	0	5	5	5	5	30	10	10	20	14	6	6	4	30	80
MORESCO I	10	10	0	5	5	5	5	40	10	10	20	14	6	6	4	30	90
MORESCO II	10	10	10	5	5	5	2	47	10	10	20	14	6	6	4	30	97
FIBECO	10	10	0	5	5	5	2	37	10	0	10	14	6	0	4	24	71
BUSECO	10	10	10	5	5	5	5	50	10	10	20	14	6	6	4	30	100
CAMELCO	10	10	10	5	5	5	2	47	10	10	20	14	6	6	4	30	97
LANECO	10	10	0	5	5	5	5	40	10	10	20	14	6	6	4	30	90

## Appendix D: Monthly Institutional Assessment Report

INSTITUTIONAL PERFORMANCE ASSESSMENT REPORT																	
For the Month of December 2021																	
Electric Cooperatives	Good Governance (50%)								Leadership and Management (20%)			Stakeholders (30%)					Total
	Cash Adv. / Power Acct. Payables (10 pts.)	BOD Attendance (10 pts.)	Cont. qual. (10 pts.)	Absence of verified complaint (5 pts.)	Reorganizational Structure (5 pts.)	IT Infrastructure (5 pts.)	Audit Rating (5 pts.)	Sub-total	Employee - Consumer ratio (10 pts.)	Avail. of retirement fund (10 pts.)	Sub-total	Customer Service Standard (14 pts.)	Conduct of AGMA (6 pts.)	District Election (6 pts.)	Actions on consumer complaint (4 pts.)	Sub-total	
<b>REGION XI</b>																	
DORECO	10	10	0	5	5	5	5	40	10	10	20	14	6	6	4	30	90
DANECO	10	10	10	5	5	5	5	50	10	10	20	14	6	6	4	30	100
DASURECO	10	10	0	5	5	5	5	40	10	10	20	14	6	6	4	30	90
<b>REGION XII</b>																	
COTELCO	10	10	10	5	5	5	5	50	10	10	20	14	6	6	4	30	100
COTELCO-PPALMA	10	10	0	5	5	5	5	40	10	0	10	14	0	0	4	18	68
SOCOTECO I	10	10	10	5	5	5	5	50	10	0	10	14	6	6	4	30	90
SOCOTECO II	10	10	10	5	5	5	5	50	10	10	20	14	6	6	4	30	100
SUKELCO	10	10	0	5	5	5	2	37	10	10	20	14	6	6	4	30	87
<b>ARMM</b>																	
TAWELCO	0	0	0	5	0	0	0	5	0	0	0	0	0	0	0	0	5
SIASELCO	0	0	0	5	5	0	0	10	0	0	0	0	0	0	4	4	14
SULECO	0	0	0	5	5	0	0	10	10	0	10	0	0	0	0	0	20
BASELCO	0	0	0	5	5	0	0	10	10	10	20	0	6	6	4	16	46
CASELCO	0	0	0	5	0	0	0	5	0	0	0	0	6	0	0	6	11
LASURECO	0	0	0	5	5	0	0	10	10	0	10	0	0	6	0	6	26
MAGELCO	10	10	0	5	5	4	0	34	10	10	20	0	6	0	4	10	64
<b>CARAGA</b>																	
ANECO	10	10	10	5	5	4	5	49	10	10	20	14	6	6	4	30	99
ASELCO	10	10	10	5	5	5	5	50	10	10	20	14	6	6	4	30	100
SURNECO	10	10	10	5	5	5	5	50	10	10	20	14	6	6	4	30	100
SIARELCO	10	10	0	5	5	5	5	40	10	10	20	14	6	6	4	30	90
DIELCO	10	10	10	5	5	5	5	50	10	0	10	14	6	6	4	30	90
SURSECO I	10	10	10	5	5	5	5	50	10	10	20	14	6	6	4	30	100
SURSECO II	10	10	10	5	5	5	5	50	10	10	20	14	6	0	4	24	94

## Appendix E: Table on the Level of Energization

Electric cooperatives	Energization Level	Color Classification
<b>Region I</b>		
INEC	100.00	Yellow-1
ISECO	100.00	Green
LUELCO	100.00	Green
PANELCO I	100.00	Yellow-1
CENPELCO	100.00	Yellow-1
PANELCO III	100.00	Green
<b>Region II</b>		
BATANELCO	100.00	Yellow-1
CAGELCO I	100.00	Yellow-1
CAGELCO II	100.00	Green
ISELCO I	100.00	Yellow-1
ISELCO II	100.00	Yellow-1
NUVELCO	100.00	Yellow-1
QUIRELCO	100.00	Green
<b>CAR</b>		
ABRECO	100.00	Red
BENECO	100.00	Yellow-2
IFELCO	100.00	Yellow-1
KAELCO	93.44	Yellow-1
MOPRECO	100.00	Green
<b>Region III</b>		
AURELCO	100.00	Green
TARELCO I	100.00	Yellow-1
TARELCO II	100.00	Green
NEECO I	100.00	Green
NEECO II - AREA 1	100.00	Green
NEECO II - AREA 2	100.00	Green
SAJELCO	100.00	Yellow-1
PRESCO	100.00	Green
PELCO I	100.00	Green
PELCO II	100.00	Green
PELCO III	100.00	Yellow-1
PENELCO	100.00	Green
ZAMECO I	100.00	Yellow-1
ZAMECO II	100.00	Yellow-1

**Appendix E: Table on the Level of Energization**

<b>Electric cooperatives</b>	<b>Energization Level</b>	<b>Color Classification</b>
<b>Region IV-A</b>		
FLECO	100.00	Green
BATELEC I	100.00	Yellow-1
BATELEC II	100.00	Green
QUEZELCO I	92.29	Yellow-1
QUEZELCO II	90.77	Green
<b>Region IV-B</b>		
LUBELCO	100.00	Yellow-1
OMECO	88.66	Green
ORMECO	100.00	Yellow-1
MARELCO	100.00	Yellow-1
TIELCO	100.00	Green
ROMELCO	100.00	Green
BISELCO	100.00	Yellow-1
PALECO	86.78	Yellow-1
<b>Region V</b>		
CANORECO	100.00	Green
CASURECO I	100.00	Green
CASURECO II	100.00	Yellow-1
CASURECO III	100.00	Yellow-1
CASURECO IV	100.00	Green
ALECO	100.00	Red
SORECO I	100.00	Yellow-1
SORECO II	100.00	Yellow-1
FICELCO	100.00	Green
MASELCO	65.48	Red
TISELCO	93.52	Yellow-1
<b>Region VI</b>		
AKELCO	100.00	Yellow-1
ANTECO	100.00	Yellow-1
CAPELCO	100.00	Green
ILECO I	100.00	Green
ILECO II	94.06	Yellow-1
ILECO III	100.00	Green
GUIMELCO	100.00	Green
NONECO	92.80	Yellow-1
CENECO	100.00	Yellow-1
NOCECO	83.40	Green



## Appendix E: Table on the Level of Energization

Electric cooperatives	Energization Level	Color Classification
<b>Region VII</b>		
NORECO I	78.32	Yellow-1
NORECO II	100.00	Yellow-1
BANELCO	100.00	Green
CEBECO I	100.00	Green
CEBECO II	100.00	Green
CEBECO III	100.00	Green
PROSIELCO	100.00	Green
CELCO	100.00	Green
BOHECO I	100.00	Yellow-1
BOHECO II	100.00	Green
<b>Region VIII</b>		
DORELCO	99.18	Green
LEYECO II	100.00	Green
LEYECO III	100.00	Green
LEYECO IV	100.00	Green
LEYECO V	97.91	Yellow-1
SOLECO	100.00	Green
BILECO	100.00	Green
NORSAMELCO	90.43	Yellow-1
SAMELCO I	100.00	Green
SAMELCO II	100.00	Green
ESAMELCO	100.00	Green
<b>Region IX</b>		
ZANECO	87.05	Yellow-1
ZAMSURECO I	89.52	Green
ZAMSURECO II	73.40	Yellow-2
ZAMCELCO	81.82	Yellow-2
<b>Region X</b>		
MOELCI I	100.00	Yellow-1
MOELCI II	100.00	Yellow-1
MORESCO I	100.00	Green
MORESCO II	98.73	Green
FIBECO	99.41	Yellow-2
BUSECO	100.00	Green
CAMELCO	100.00	Yellow-1
LANECO	89.80	Yellow-1

### Appendix E: Table on the Level of Energization

Electric cooperatives	Energization Level	Color Classification
<b>Region XI</b>		
DORECO	95.35	Yellow-1
DANECO	77.16	Yellow-2
DASURECO	92.11	Yellow-1
<b>Region XII</b>		
COTELCO	99.53	Green
COTELCO-PPALMA	66.65	Green
SOCOTECO I	84.37	Yellow-1
SOCOTECO II	91.05	Yellow-1
SUKELCO	95.78	Yellow-1
<b>ARMM</b>		
TAWELCO	21.82	Red
SIASELCO	24.81	Yellow-2
SULECO	27.86	Red
BASELCO	52.03	Red
CASELCO	67.42	Yellow-2
LASURECO	60.49	Red
MAGELCO	37.09	Yellow-2
<b>Region XIII</b>		
ANECO	100.00	Green
ASELCO	100.00	Yellow-1
SURNECO	100.00	Yellow-1
SIARELCO	100.00	Green
DIELCO	100.00	Green
SURSECO I	100.00	Green
SURSECO II	100.00	Green

## **Appendix F: List of Electric Cooperatives**

### **Region I**

### **Ilocos Region**

INEC	Ilocos Norte Electric Cooperative, Inc.
ISECO	Ilocos Sur Electric Cooperative, Inc.
LUELCO	La Union Electric Cooperative, Inc.
PANELCO I	Pangasinan I Electric Cooperative, Inc.
CENPELCO	Central Pangasinan Electric Cooperative, Inc.
PANELCO III	Pangasinan III Electric Cooperative, Inc.

### **Region II**

### **Cagayan Valley**

BATANELCO	Batanes Electric Cooperative, Inc.
CAGELCO I	Cagayan I Electric Cooperative, Inc.
CAGELCO II	Cagayan II Electric Cooperative, Inc.
ISELCO I	Isabela I Electric Cooperative, Inc.
ISELCO II	Isabela II Electric Cooperative, Inc.
NUVELCO	Nueva Vizcaya Electric Cooperative, Inc.
QUIRELCO	Quirino Electric Cooperative, Inc.

### **CAR**

### **Cordillera Administrative Region**

ABRECO	Abra Electric Cooperative, Inc.
BENECO	Benguet Electric Cooperative, Inc.
IFELCO	Ifugao Electric Cooperative, Inc.
KAELCO	Kalinga-Apayao Electric Cooperative, Inc.
MOPRECO	Mountain Province Electric Cooperative, Inc.

### **Region III**

### **Central Luzon**

AURELCO	Aurora Electric Cooperative, Inc.
TARELCO I	Tarlac I Electric Cooperative, Inc.
TARELCO II	Tarlac II Electric Cooperative, Inc.
NEECO I	Nueva Ecija I Electric Cooperative, Inc.
NEECO II - Area 1	Nueva Ecija II Electric Cooperative, Inc. - Area 1
NEECO II - Area 2	Nueva Ecija II Electric Cooperative, Inc. - Area 2
SAJELCO	San Jose City Electric Cooperative, Inc.
PRESCO	Pampanga Rural Electric Service Coop., Inc.
PELCO I	Pampanga I Electric Cooperative, Inc.
PELCO II	Pampanga II Electric Cooperative, Inc.
PELCO III	Pampanga III Electric Cooperative, Inc.
PENELCO	Peninsula (Bataan) Electric Cooperative, Inc.
ZAMECO I	Zambales I Electric Cooperative, Inc.
ZAMECO II	Zambales II Electric Cooperative, Inc.

## Appendix F: List of Electric Cooperatives

### Region IV-A

### CALABARZON

FLECO	First Laguna Electric Cooperative, Inc.
BATELEC I	Batangas I Mindoro Electric Cooperative, Inc.
BATELEC II	Batangas II Electric Cooperative, Inc.
QUEZELCO I	Quezon I Electric Cooperative, Inc.
QUEZELCO II	Quezon II Electric Cooperative, Inc.

### Region IV-B

### MIMAROPA

LUBELCO	Lubang Electric Cooperative, Inc.
OMECCO	Occidental Mindoro Electric Cooperative, Inc.
ORMECO	Oriental Mindoro Electric Cooperative, Inc.
MARELCO	Marinduque Electric Cooperative, Inc.
TIELCO	Tablas Island Electric Cooperative, Inc.
ROMELCO	Romblon Electric Cooperative, Inc.
BISELCO	Busuanga Island Electric Cooperative, Inc.
PALECO	Palawan Electric Cooperative, Inc.

### Region V

### Bicol Region

CANORECO	Camarines Norte Electric Cooperative, Inc.
CASURECO I	Camarines Sur I Electric Cooperative, Inc.
CASURECO II	Camarines Sur II Electric Cooperative, Inc.
CASURECO III	Camarines Sur III Electric Cooperative, Inc.
CASURECO IV	Camarines Sur IV Electric Cooperative, Inc.
ALECO	Albay Electric Cooperative, Inc.
SORECO I	Sorsogon I Electric Cooperative, Inc.
SORECO II	Sorsogon II Electric Cooperative, Inc.
FICELCO	First Catanduanes Electric Cooperative, Inc.
MASELCO	Masbate Electric Cooperative, Inc.
TISELCO	Ticao Island Electric Cooperative, Inc.

### Region VI

### Western Visayas

AKELCO	Aklan Electric Cooperative, Inc.
ANTECO	Antique Electric Cooperative, Inc.
CAPELCO	Capiz Electric Cooperative, Inc.
ILECO I	Iloilo I Electric Cooperative, Inc.
ILECO II	Iloilo II Electric Cooperative, Inc.
ILECO III	Iloilo III Electric Cooperative, Inc.
GUIMELCO	Guimaras Electric Cooperative, Inc.
NONECO	Northern Negros Electric Cooperative, Inc.
CENECO	Central Negros Electric Cooperative, Inc.
NOCECO	Negros Occidental Electric Cooperative, Inc.

## **Appendix F: List of Electric Cooperatives**

### **Region VII**

#### **Central Visayas**

NORECO I	Negros Oriental I Electric Cooperative, Inc.
NORECO II	Negros Oriental II Electric Cooperative, Inc.
BANELCO	Bantayan Island Electric Cooperative, Inc.
CEBECO I	Cebu I Electric Cooperative, Inc.
CEBECO II	Cebu II Electric Cooperative, Inc.
CEBECO III	Cebu III Electric Cooperative, Inc.
PROSIELCO	Province of Siquijor Electric Cooperative, Inc.
CELCO	Camotes Electric Cooperative, Inc.
BOHECO I	Bohol I Electric Cooperative, Inc.
BOHECO II	Bohol II Electric Cooperative, Inc.

### **Region VIII**

#### **Eastern Visayas**

DORELCO	Don Orestes Romualdez Electric Cooperative, Inc.
LEYECO II	Leyte II Electric Cooperative, Inc.
LEYECO III	Leyte III Electric Cooperative, Inc.
LEYECO IV	Leyte IV Electric Cooperative, Inc.
LEYECO V	Leyte V Electric Cooperative, Inc.
SOLECO	Southern Leyte Electric Cooperative, Inc.
BILECO	Biliran Electric Cooperative, Inc.
NORSAMELCO	Northern Samar Electric Cooperative, Inc.
SAMELCO I	Samar I Electric Cooperative, Inc.
SAMELCO II	Samar II Electric Cooperative, Inc.
ESAMELCO	Eastern Samar Electric Cooperative, Inc.

### **Region IX**

#### **Zamboanga Peninsula**

ZANECO	Zamboanga del Norte Electric Cooperative, Inc.
ZAMSURECO I	Zamboanga del Sur I Electric Cooperative, Inc.
ZAMSURECO II	Zamboanga del Sur II Electric Cooperative, Inc.
ZAMCELCO	Zamboanga City Electric Cooperative, Inc.

### **Region X**

#### **Northern Mindanao**

MOELCI I	Misamis Occidental I Electric Cooperative, Inc.
MOELCI II	Misamis Occidental II Electric Cooperative, Inc.
MORESCO I	Misamis Oriental I Electric Cooperative, Inc.
MORESCO II	Misamis Oriental II Electric Cooperative, Inc.
FIBECO	First Bukidnon Electric Cooperative, Inc.
BUSECO	Bukidnon II Electric Cooperative, Inc.
CAMELCO	Camiguin Electric Cooperative, Inc.
LANECO	Lanao del Norte Electric Cooperative, Inc.

## **Appendix F: List of Electric Cooperatives**

### **Region XI**

#### **Davao Region**

DORECO	Davao Oriental Electric Cooperative, Inc.
DANECO	Davao del Norte Electric Cooperative, Inc.
DASURECO	Davao del Sur Electric Cooperative, Inc.

### **Region XII**

#### **SOCCKSARGEN**

COTELCO	North Cotabato Electric Cooperative, Inc.
COTELCO-PPALMA	North Cotabato Electric Cooperative, Inc. - PPALMA
SOCOTECO I	South Cotabato I Electric Cooperative, Inc.
SOCOTECO II	South Cotabato II Electric Cooperative, Inc.
SUKELCO	Sultan Kudarat Electric Cooperative, Inc.

### **ARMM**

#### **Autonomous Region in Muslim Mindanao**

TAWELCO	Tawi-Tawi Electric Cooperative, Inc.
SIASELCO	Siasi Electric Cooperative, Inc.
SULECO	Sulu Electric Cooperative, Inc.
BASELCO	Basilan Electric Cooperative, Inc.
CASELCO	Cagayan de Sulu Electric Cooperative, Inc.
LASURECO	Lanao del Sur Electric Cooperative, Inc.
MAGELCO	Maguindanao Electric Cooperative, Inc.

### **Region XIII**

#### **Caraga Administrative Region**

ANECO	Agusan del Norte Electric Cooperative, Inc.
ASELCO	Agusan del Sur Electric Cooperative, Inc.
SURNECO	Surigao del Norte Electric Cooperative, Inc.
SIARELCO	Siargao Electric Cooperative, Inc.
DIELCO	Dinagat Island Electric Cooperative, Inc.
SURSECO I	Surigao del Sur I Electric Cooperative, Inc.
SURSECO II	Surigao del Sur II Electric Cooperative, Inc.